

Soggy Paws Adventures 2010 - 2011

**Ecuador – Galapagos – Easter – Pitcairn – French
Polynesia – Hawaii – Cooks – Samoas - Tonga**

Soggy Paws CSY 44 – 1981



Proud Member of



**Seven Seas Cruising
Association**

www.ssca.org

Florida to the Panama Canal

**May 2007 to
Sep 2008**

- Mexico
- Belize
- Guatemala
- Honduras
- Panama
- Colombia



Sep 2008 - 2009

- Pacific Panama
- Costa Rica
- Ecuador
- 3 Trips 'Inland'
 - Chile & Argentina
 - Peru
 - Ecuador
- Haulout and Major Refit



2010



2011

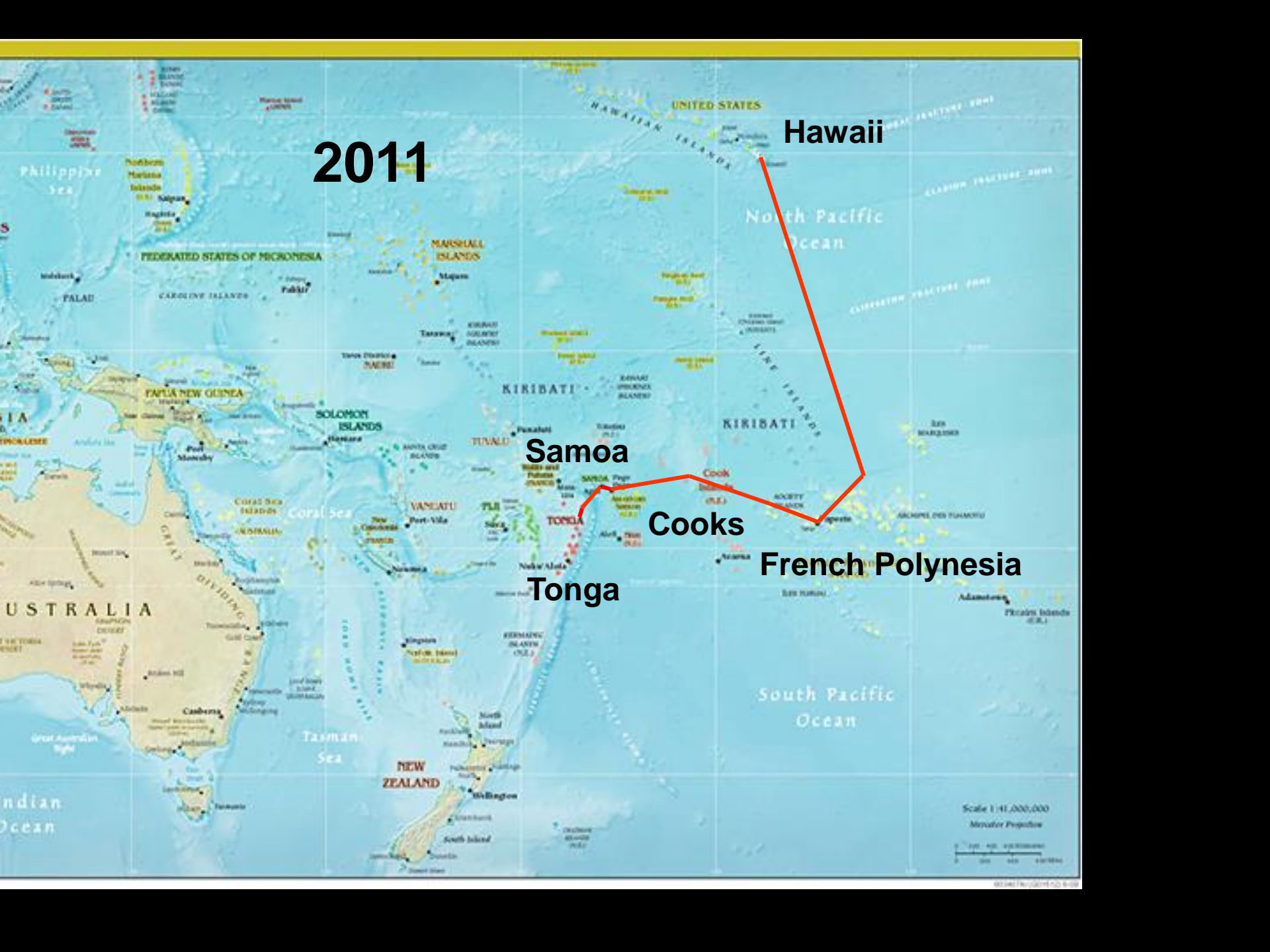
Hawaii

Samoa

Cooks

Tonga

French Polynesia



Scale 1:41,000,000
Mercator Projection
0 200 400 600 800 1000

Leaving Mainland Ecuador January 7, 2010





Fresh Tuna for Dinner!





Our “Underway” Fishing Gear

A Visiting Booby



Dawn Landfall San Cristobal, Galapagos

January 11, 2010



Soggy Paws' Route thru the Galapagos

Jan 11 to Mar 2, 2010



Puerto Moreno Harbor

Soggy Paws



Official Galapagos Check-In

Coast Guard
Our Agent
Port Captain
Medical Officer
Agricultural Insp





**The Streets of San Cristobal
A Big Surprise**



Sea Lions Own the Waterfront





Marine Iguanas

Galapagos Tortoise - 5' long, nose to tail



Avg lifespan ~150 years





A photograph of a Galapagos tortoise breeding program enclosure. The enclosure is a long, narrow structure with a metal grid floor and a corrugated metal roof. Several people are visible: a man in a yellow shirt and white shorts stands on the left, a man in a white shirt and khaki shorts is leaning over the grid floor in the center, and other people are visible in the background. The enclosure is surrounded by a stone wall and trees.

Galapagos Tortoise Breeding Program

Hatchlings

Land Iguanas



Galapagos Penguins





Wildlife in the Isabela Anchorage

Sea Lions

A sea lion is seen swimming in clear, turquoise water. The sea lion's head and front flippers are visible above the surface, while its body and rear flippers are partially submerged. The water is bright and clear, showing some ripples and reflections.



Iguanas



Penguins



Kingfisher





Blue-footed Boobies

Boobies Fishing



Snorkeling with Sea Lions







Exploring Lava Tubes





Dive Trip to Isla Tortuga

Sightseeing Trip on Isla Isabela



All Goods are Moved Manually



Typical Galapagos 'Cruise Ship'



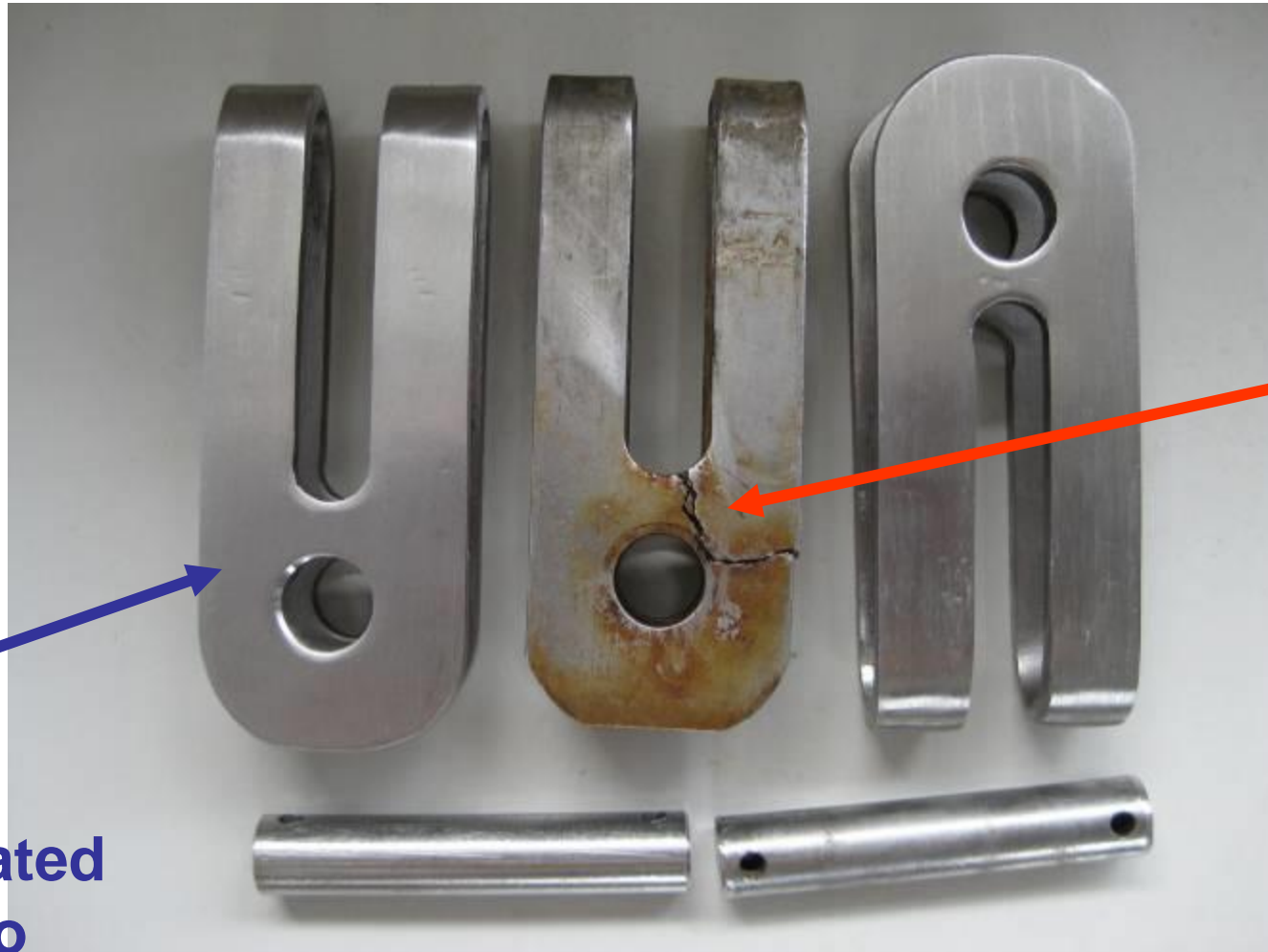
Pre- Departure Preparations

Provisioning



Pre-departure rig inspection

We find a cracked toggle on the backstay!



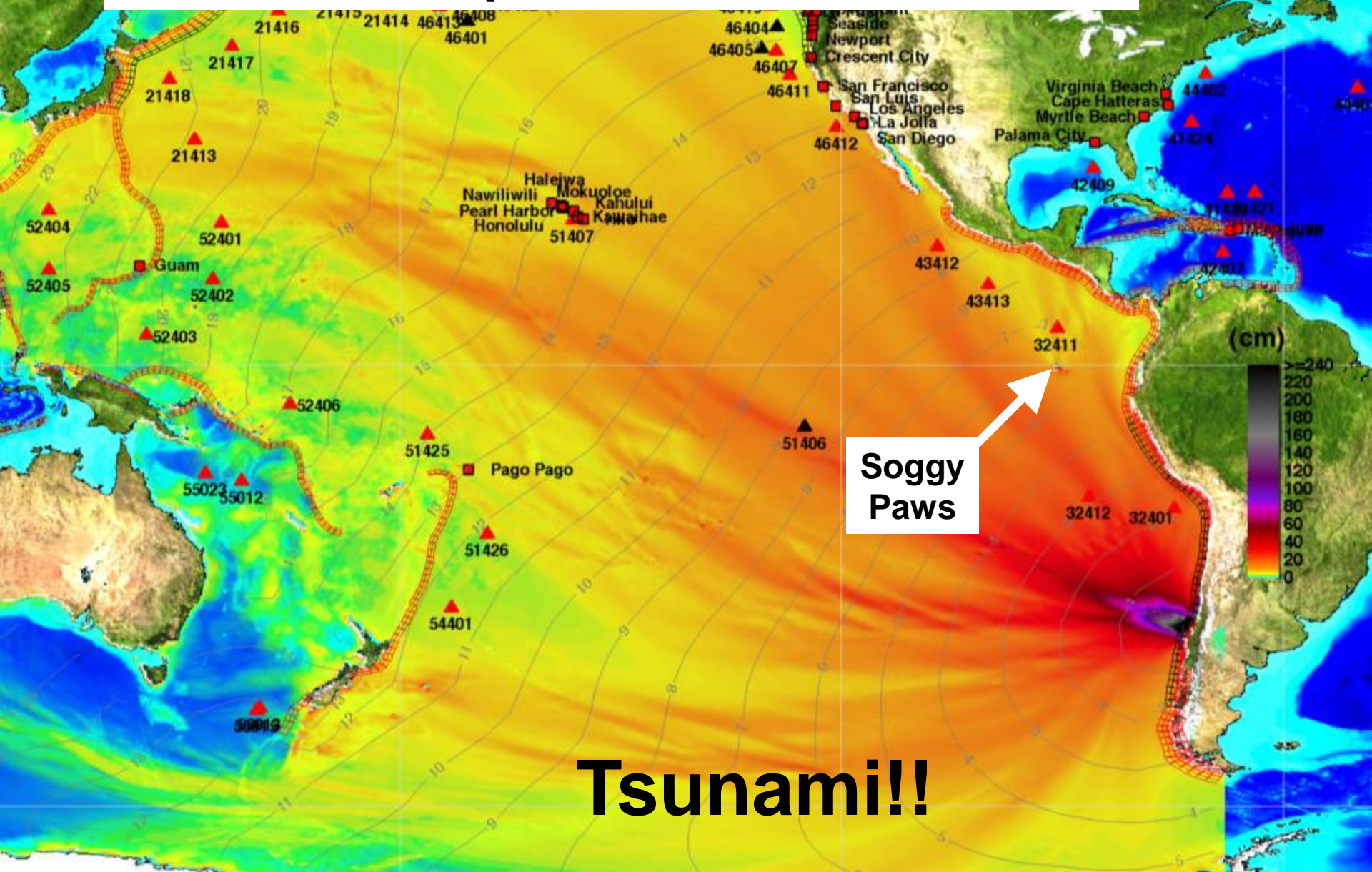
Cracked!

**New,
Fabricated
in Quito**

Topping off with \$1/gal Diesel



Chilean Earthquake / Tsunami Feb 2010



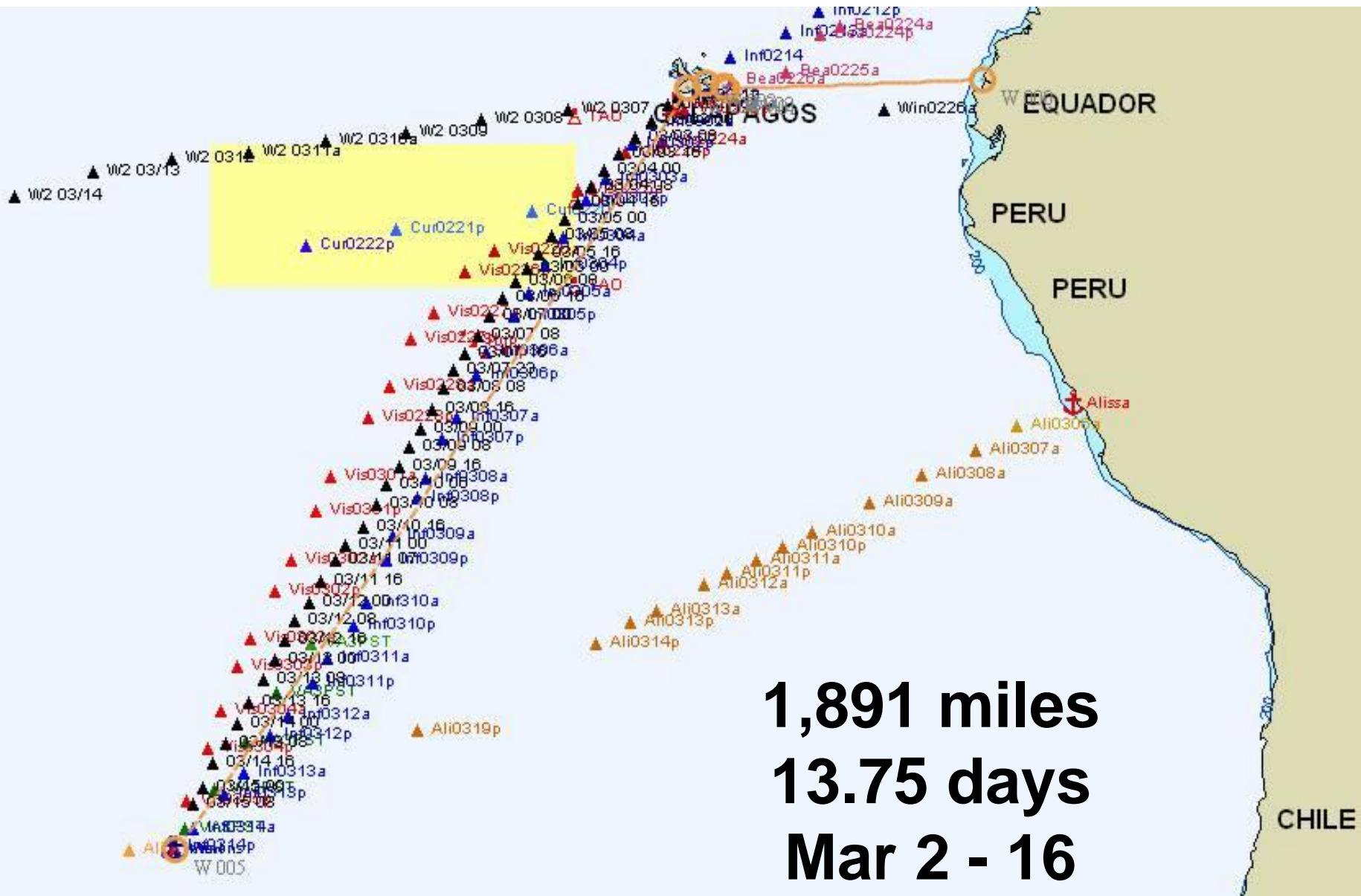
Soggy Paws

Tsunami!!



Finally Ready for the Southern Ocean

Galapagos to Easter Island



Galapagos to Easter Island





**“Henry” is
Finally
Steering!!**





**Radio Sched
2 Times a Day**



**Yet another
gorgeous
sunset at sea**

**After 2 Weeks
at Sea...
Landfall at
Easter Island**

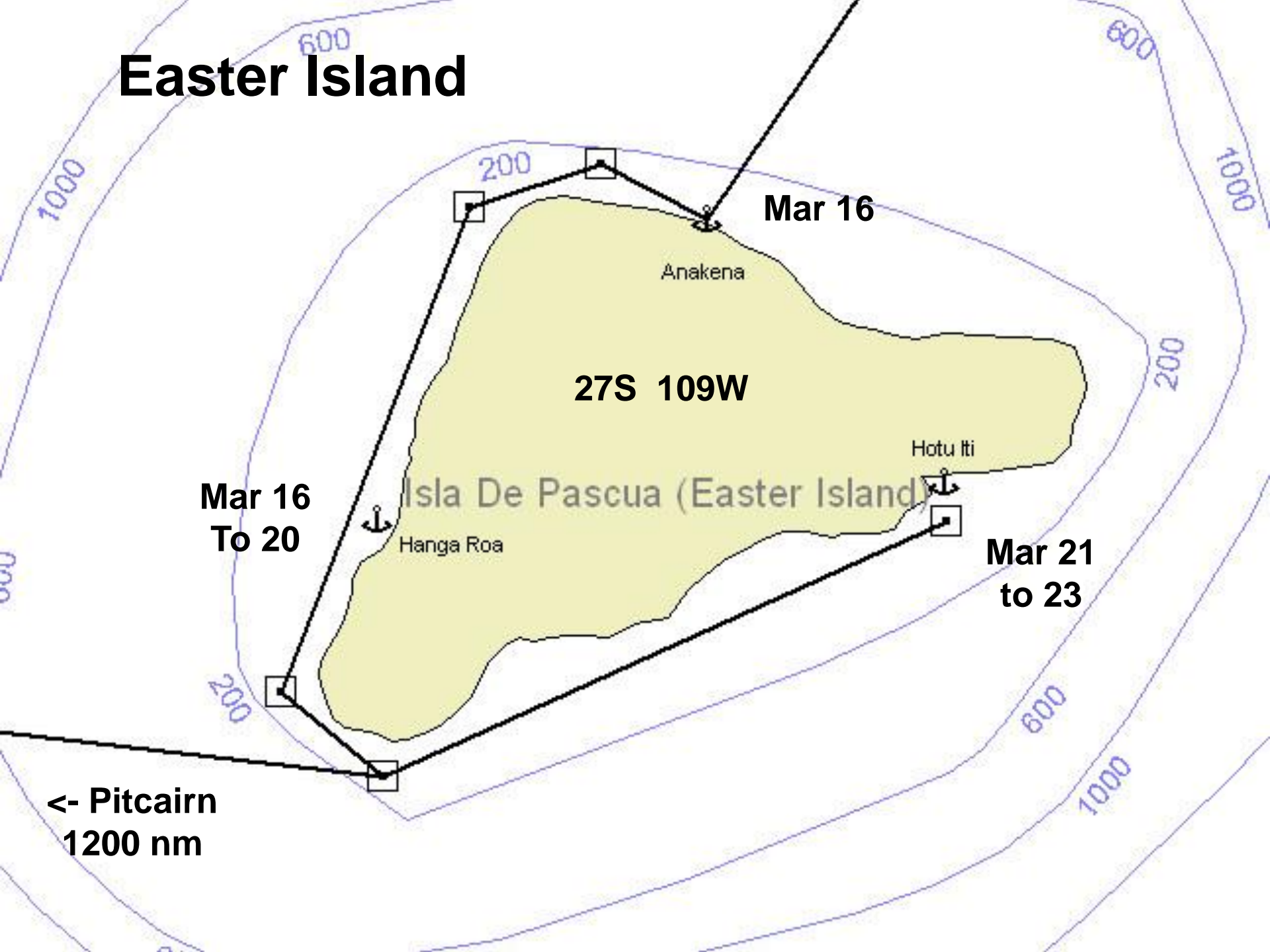


Anakena Beach

Moai on the beach at Anakena



Easter Island



Mar 16

27S 109W

Mar 16
To 20

Mar 21
to 23

← Pitcairn
1200 nm

Anakena

Hanga Roa

Hotu Iti

Isla De Pascua (Easter Island)

**The best anchorage at
Easter Island –
An open roadstead**





Checking In

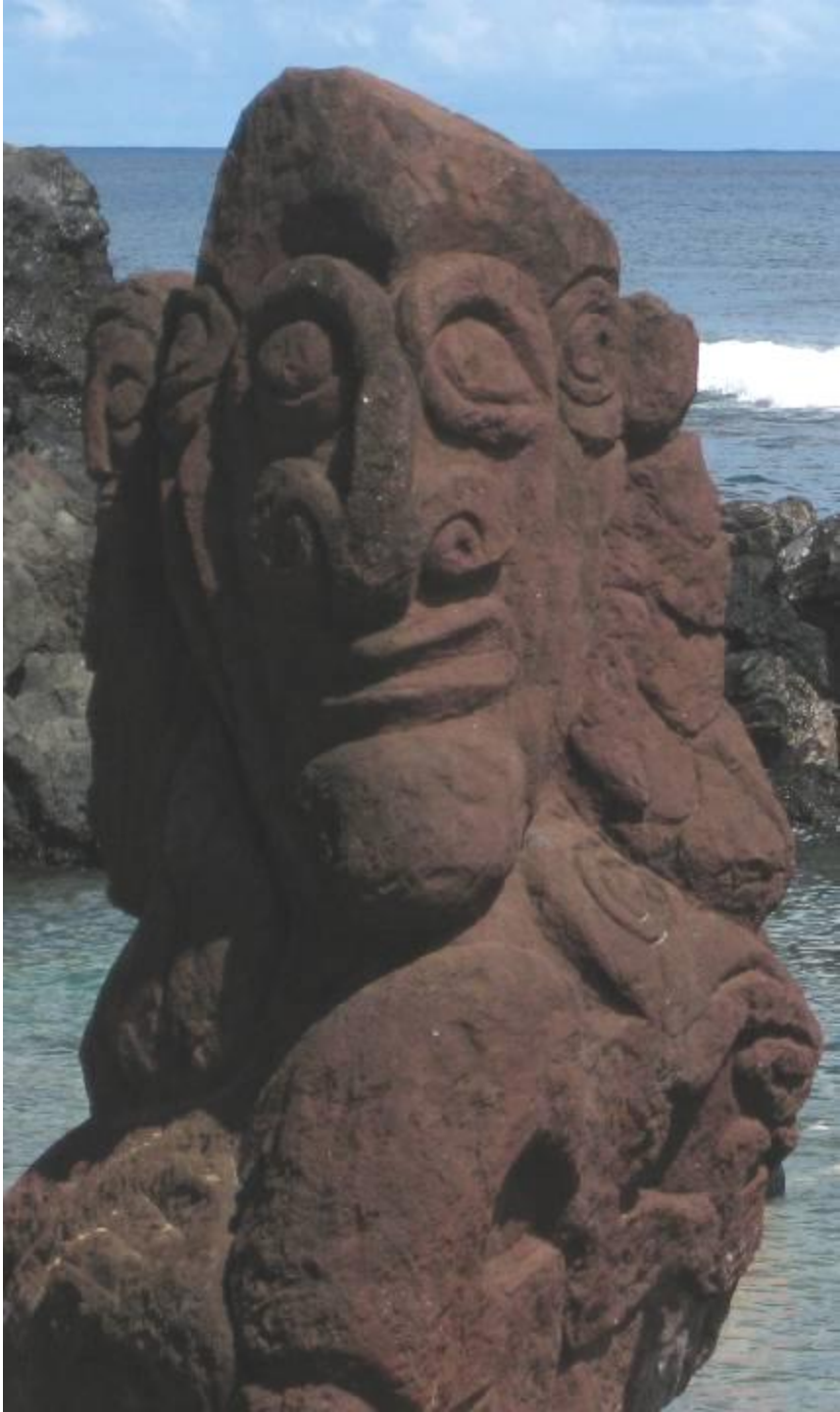


Navigating the Surf

On an Easy Day







Exotic Statues Everywhere



FLAZA
HOTUMATUA





~ 32' high
80 tons

NO SUBIR AL MONTE
DE AQUI





Fallen Moai



Cave Paintings





“Birdman” Island



Houses with No Wood Left on the Island



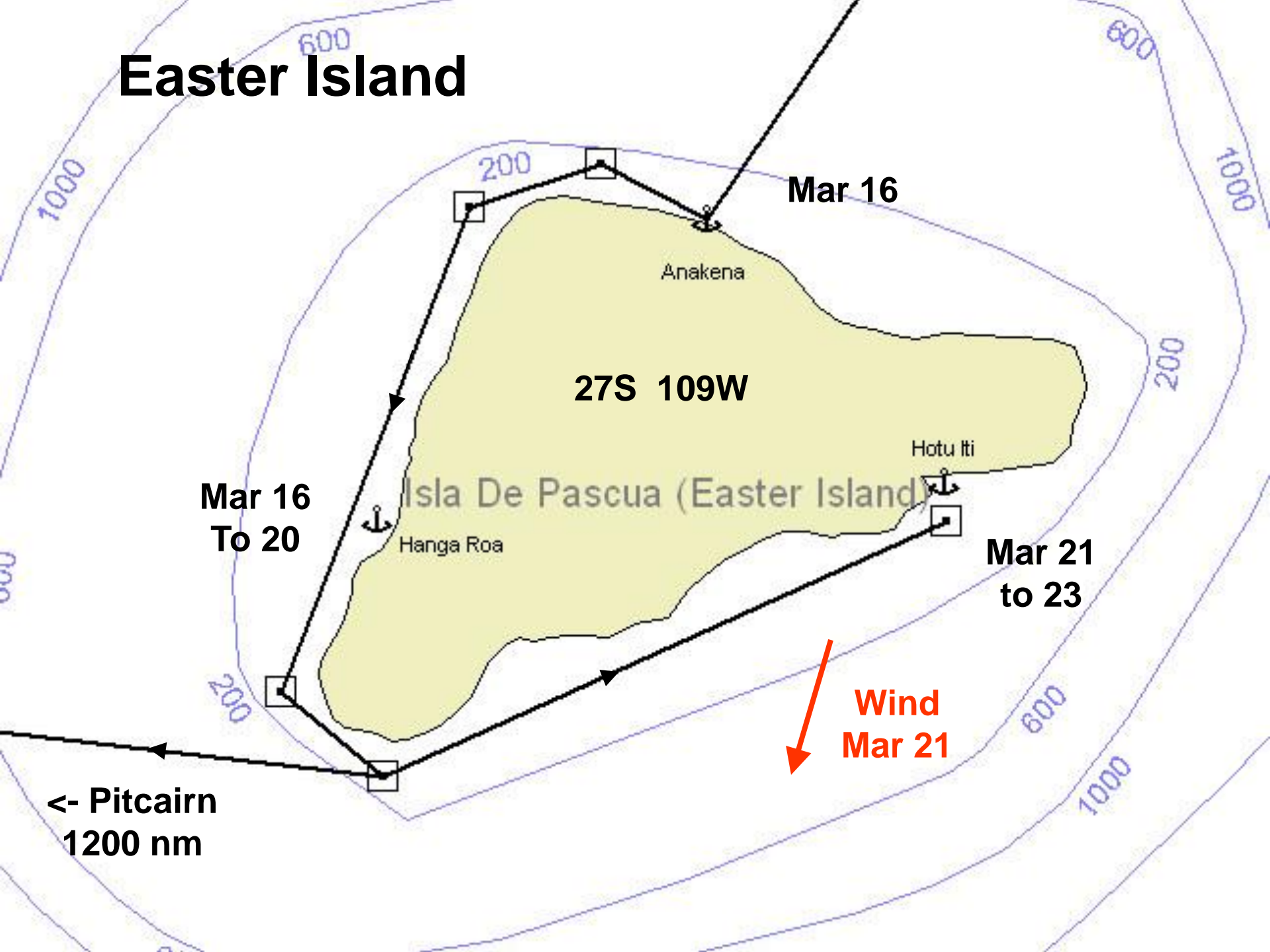




**Conditions
Get Bad
at Hanga Roa
We Move
to Hotu Iti**



Easter Island



Mar 16

Anakena

27S 109W

Hotu Iti

Mar 16
To 20

Isla De Pascua (Easter Island)

Hanga Roa

Mar 21
to 23

Wind
Mar 21

← Pitcairn
1200 nm

Hotu Iti







A Wild and Roll-y Anchorage

**VHF: “All boats must leave,
there is no safe port in the
coming weather”**



The Navy Comes to Hotu Iti to Check us Out

Weather Forces us to Leave in Unfavorable Winds



Bad Weather Makes Great Sunsets



**Flying Fish in
the Cockpit
??!!**



**35 Kts for 12 Hrs
then 2 days of
motoring!**






**Land Ho!
Pitcairn
at Last!**



Pitcairn Facts

- Settled by the mutineers from the HMS Bounty in 1790 (Fletcher Christian)
- Chosen because inaccessible and remote
- 9 Mutineers, 17 Tahitians landed
- Bounty eventually burned and sunk
- Mutineers not discovered again until 1808
- Today
 - Self-governing British Protectorate
 - Population 48, mostly Bounty descendants
 - Still remote and inaccessible (no airfield, no harbor)



**Approaching
Bounty Bay**
April 2

Welcome to
PITCAIRN ISLAND









Agriculture & Immigration Officers


Lunch with Tom & Betty Christian







**Sightseeing,
Pitcairn Style**

A historical cannon, painted black, is mounted on a wooden frame. The frame consists of two vertical posts and a horizontal top rail. A white rectangular sign is attached to the front of the frame, displaying the text "HMAS BOUNTY CANNON". The cannon is situated outdoors on a dirt path, surrounded by lush green foliage and trees. The scene is brightly lit, suggesting a sunny day.

HMAS BOUNTY CANNON

DOWN ROPE

RADIO STATION

SHIP LANDING POINT

ST. PAULS

ADAMSTOWN

THE SQUARE

JOHN ADAMS GRAVE

SCHOOL & MUSEUM

CHRISTIAN'S CAVE

ECO TRAIL

BOUNTY BAY

Ship Landing Point





View Across the Island



Landing Area









St. Paul's Pool

John Adams' Grave





The HMS BOUNTY Anchors

A Record Number of Boats



Friday Night Potluck on Pitcairn



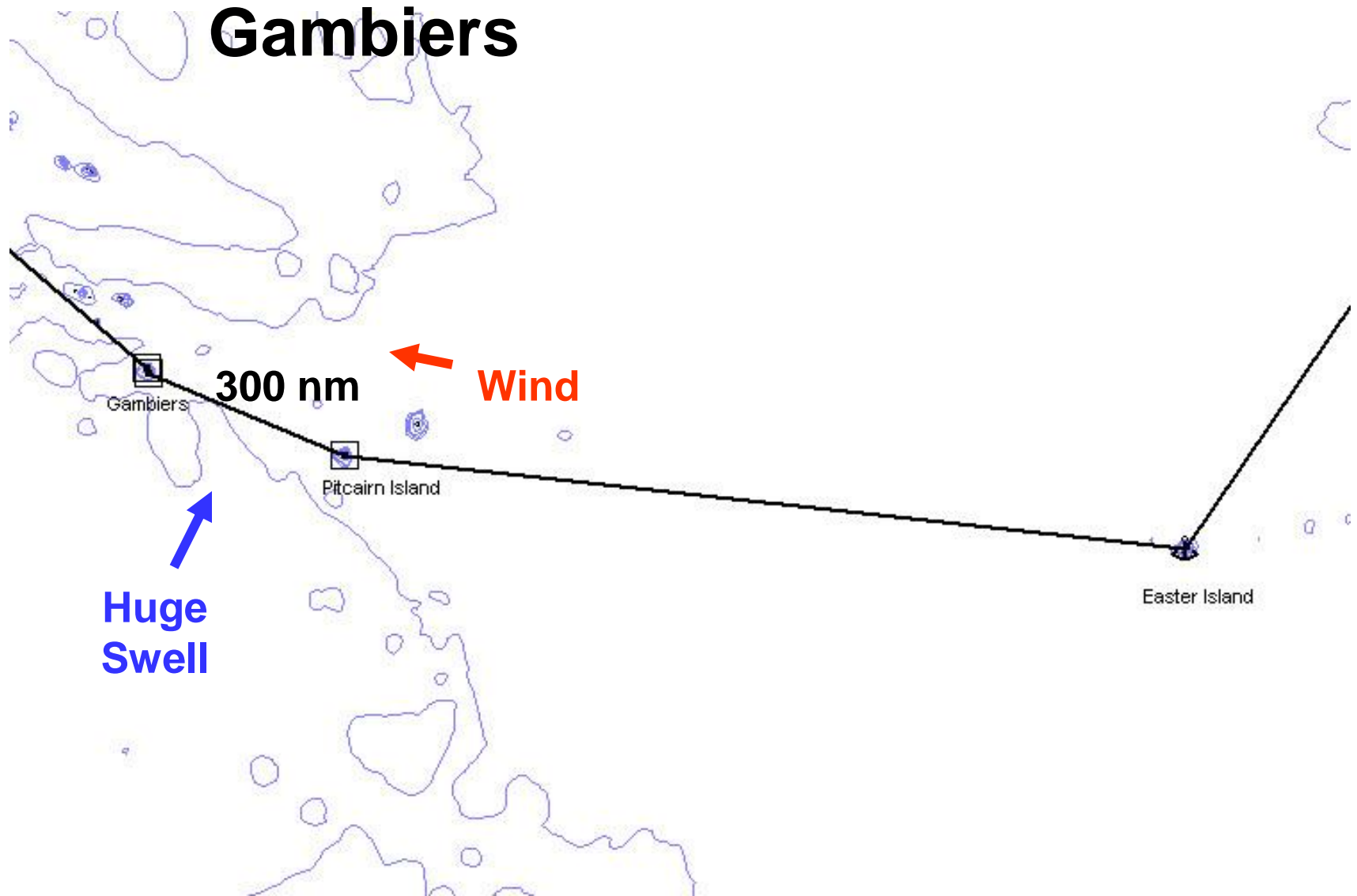


**Fruits & Veggies
Grown on Island**

Unfavorable Wx Coming Goodbye, Pitcairn



Easy 3 day Passage to the Gambiers





Wing-on-Wing

Main vanged to leeward,
jib poled to windward,
staysail centered

Gambier Islands, French Polynesia

April 6



Gambier Islands, French Polynesia

April 6





The Great Diesel Caper
(3 boats-150 gals-5 gal jugs)



Wifi, Fresh Bread, and “Pamplemousse”



Gambiers Cruising





Sally Paws®





Hiking Mount Duff



The Town & Anchorage





A Visit to a Pearl Farm

Cleaning Oysters



Seeding the Pearl







Taravai

A white sailboat with a tall mast and rigging is anchored in a calm lake. The boat has the name 'Soggy' written on its side. In the background, there are forested hills on the left and mountains in the distance under a blue sky with scattered clouds. The water is dark blue and reflects the sky.

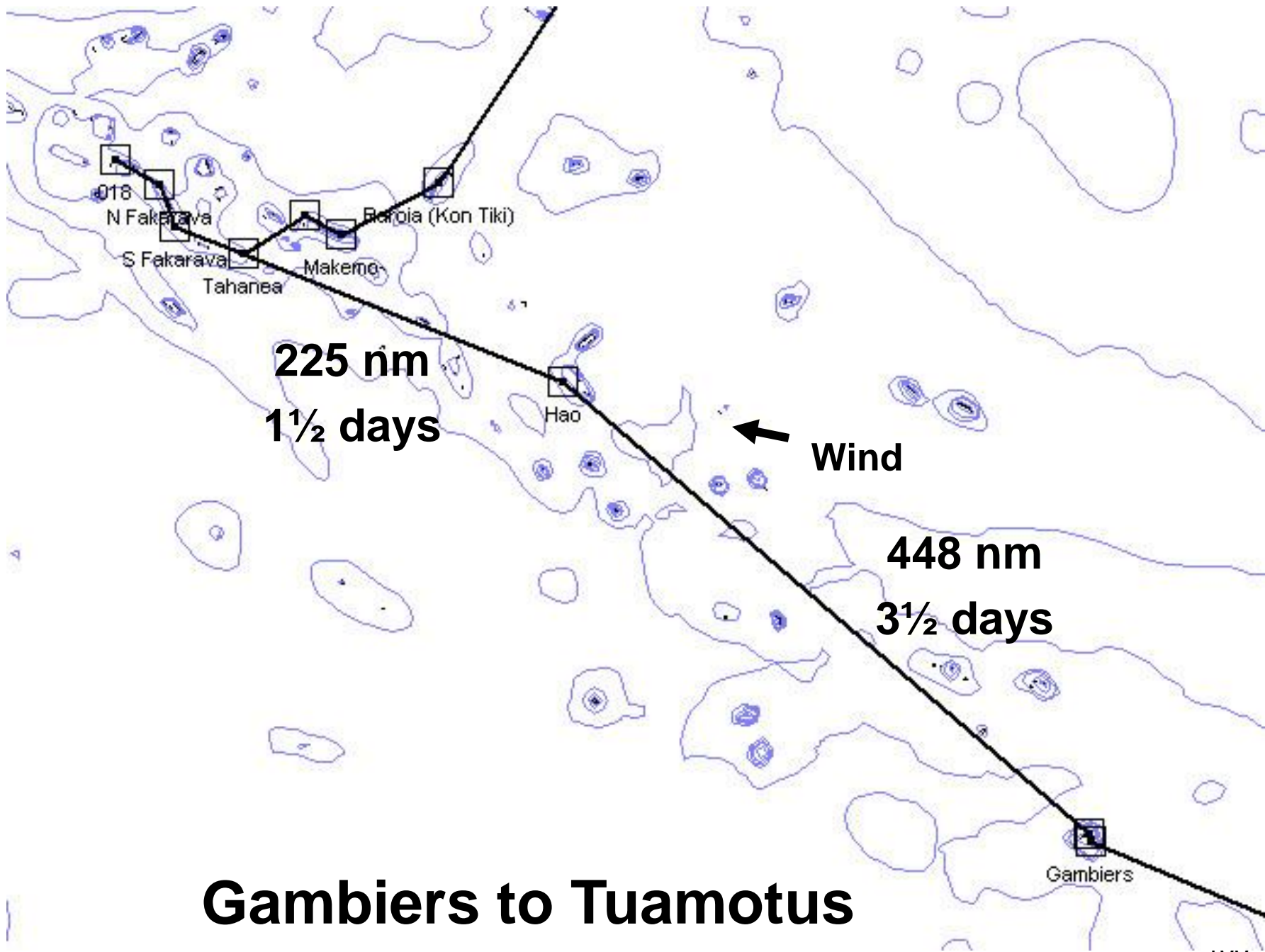
Our Uncharted Anchorage

A Feast of Poisson Cru & Canard



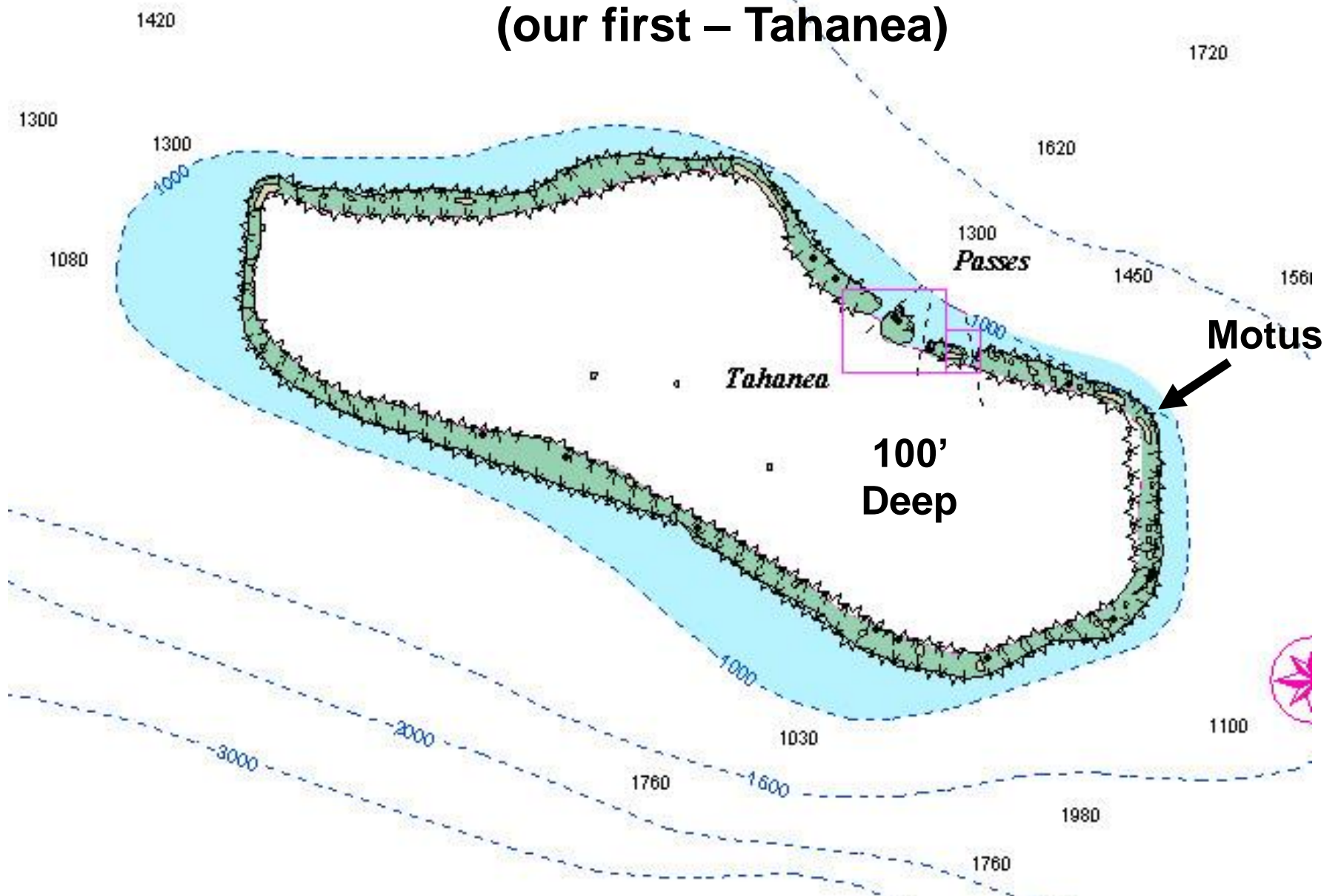


Poisson Cru



Gambiers to Tuamotus

Typical Tuamotu Atoll (our first – Tahanea)



Approaching our First Atoll



Beachcombing in Tahanea







South Fakarava



Pass Diving with Dinghy in Tow



The Sharks of South Fakarava





Sailing Inside the Atoll



**Dave
Filling
Dive
Tanks**





Some Fish Looked Familiar

Others Looked Strange



**Regal
Angelfish**

Longfin Bannerfish



Giant Moray





Manta Ray



Mantas Feeding





**Crown of
Thorns**

Anemone & Clown Fish







Favorite Dive: The Yellow Dog Canyon



**Lion
Fish**





3' Napoleon Wrasse



Hospitality, Polynesian Style

Grilled Lobster



Sunday Service in Toau



Opening Tuamotu Pearls





Authentic “Tahitian” Black Pearls

Cruisers & Locals “Jam”

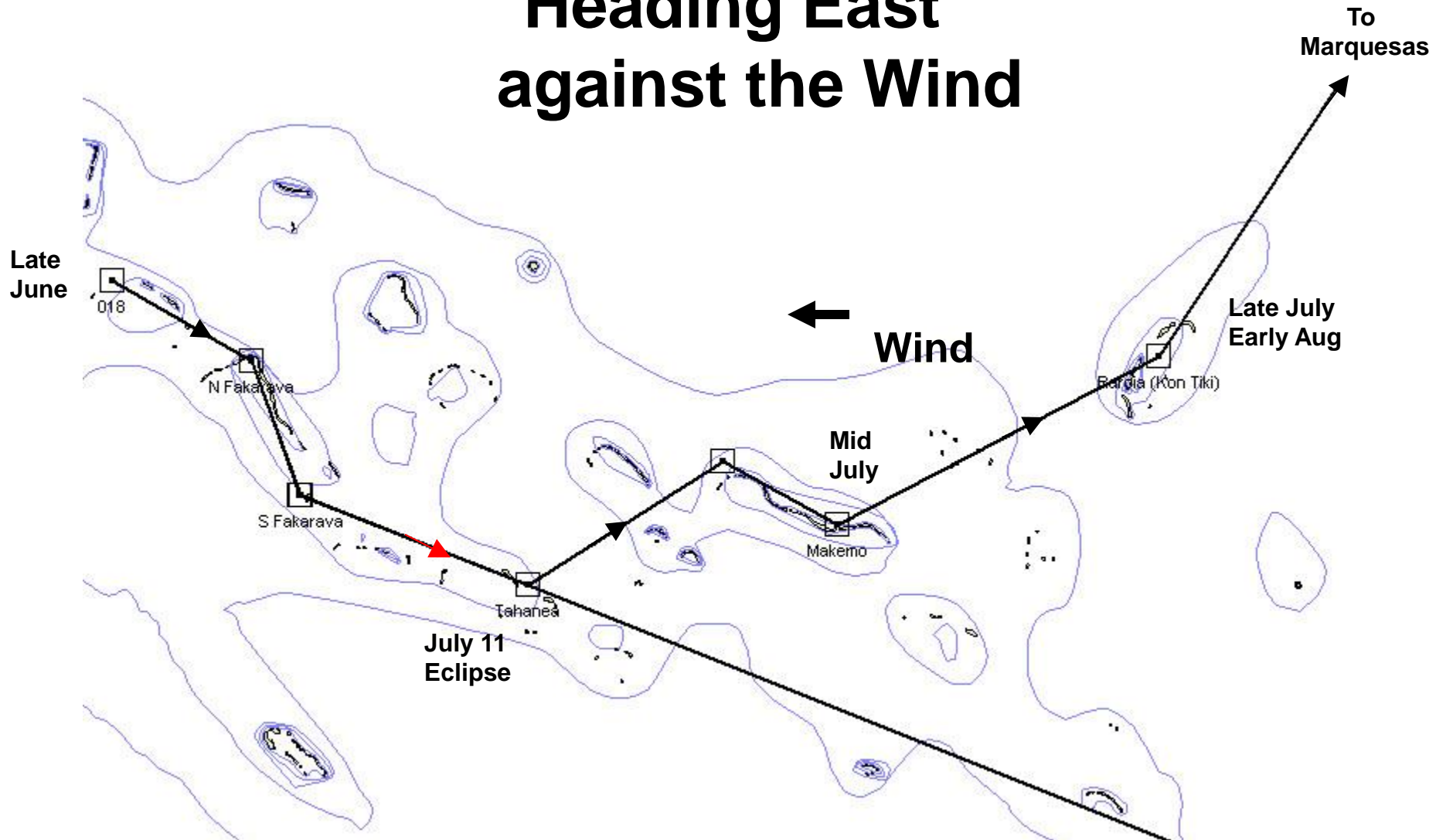






Stocking Up for the Long Haul to the Marquesas

Heading East against the Wind



In Tahanea for the Eclipse

French Scientists ask for our help



Setting Up Measurement Equipment



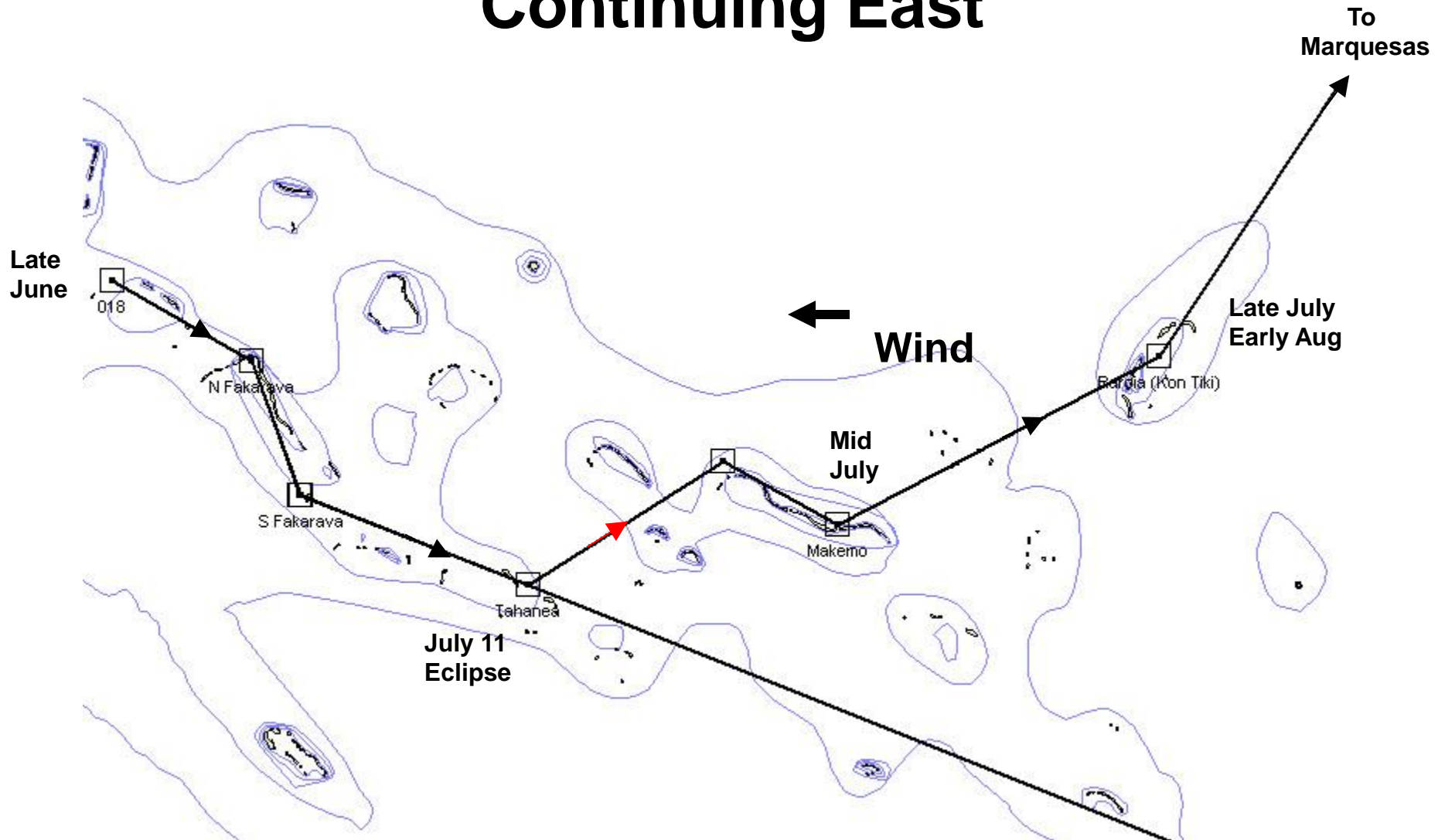






Dave Catches the Totality on “Film”

Continuing East





Heiva Celebrations at Makemo



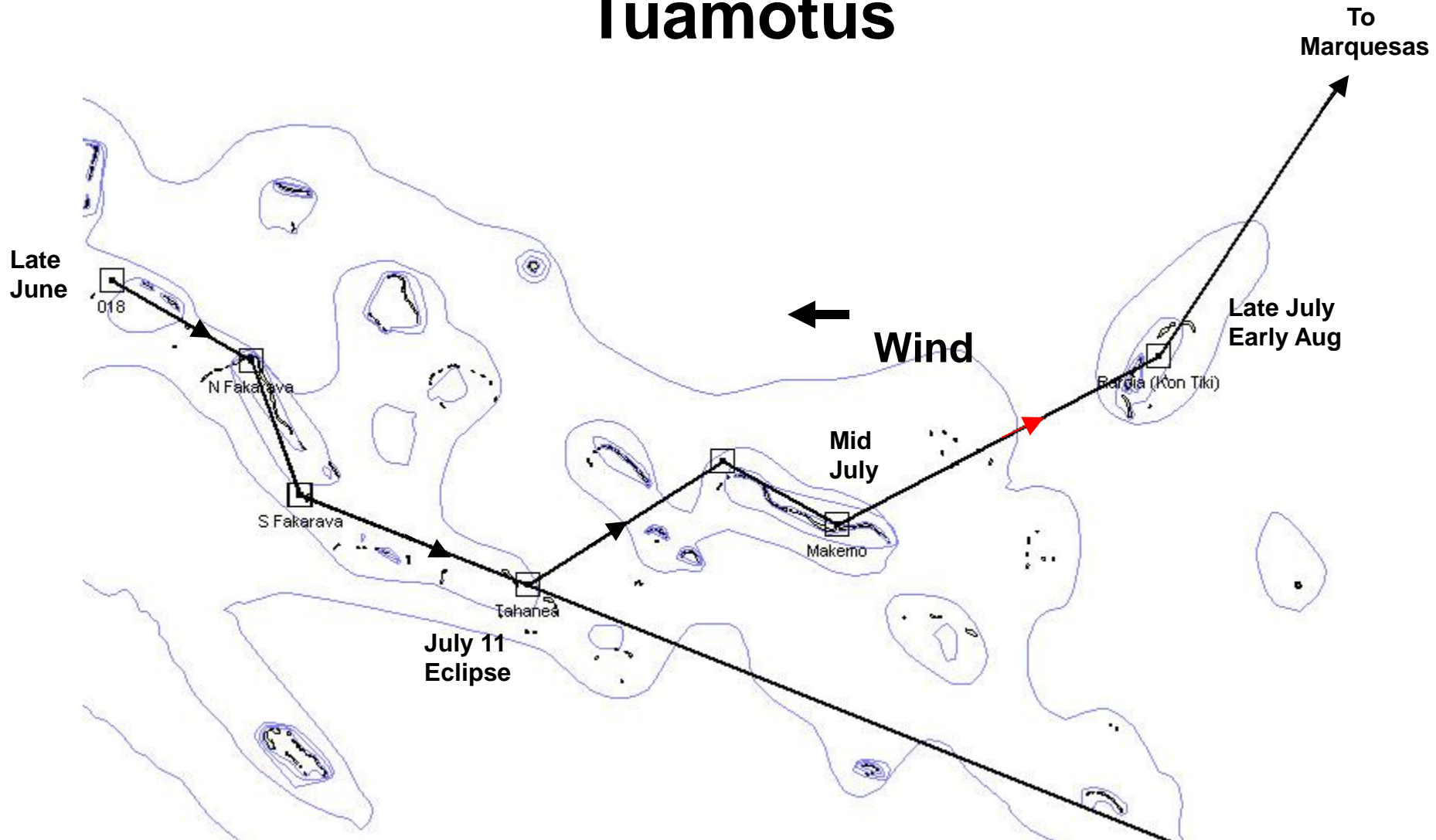
Tied to the Dock for a Blow



Dave Gives a Dinghy Ride



Eastward Through the Tuamotus



Rarioa – Searching for Kon Tiki Landing



Several Days Later – We Find the Monument



Here lies the Tomb of the

Discoverer of HONOLULU on
the Island of OAHU

and the

BENNETT JAMES
BENTLEY
BENTLEY
BENTLEY
BENTLEY

He discovered the City of HONOLULU on
the Island of OAHU
the 10th of JULY 1821
the 10th of JULY 1821
the 10th of JULY 1821
the 10th of JULY 1821
the 10th of JULY 1821
the 10th of JULY 1821
the 10th of JULY 1821



Here lies the Tomb of the

Discoverer of HONOLULU on
the Island of OAHU

and the

BENNETT JAMES
BENTLEY
BENTLEY
BENTLEY
BENTLEY

He discovered the City of HONOLULU on
the Island of OAHU
the 10th of JULY 1821
the 10th of JULY 1821
the 10th of JULY 1821
the 10th of JULY 1821
the 10th of JULY 1821
the 10th of JULY 1821
the 10th of JULY 1821

In memory of the pioneer of the pioneers,
who dedicated his life to put off the outer limits of human discoveries ... over the limitless ocean

En mémoire du pionnier parmi les pionniers qui a consacré sa vie entière à repousser
les limites extrême des connaissances humaines par delà l'océan ... sans trêve

Discovered by the King's Men in 1821
by the Discoverer and his three BENTLEYs
Discovered by his grandson, the first BENTLEY

Discovered by the King's Men in 1821
by the Discoverer and his three BENTLEYs
Discovered by his grandson, the first BENTLEY



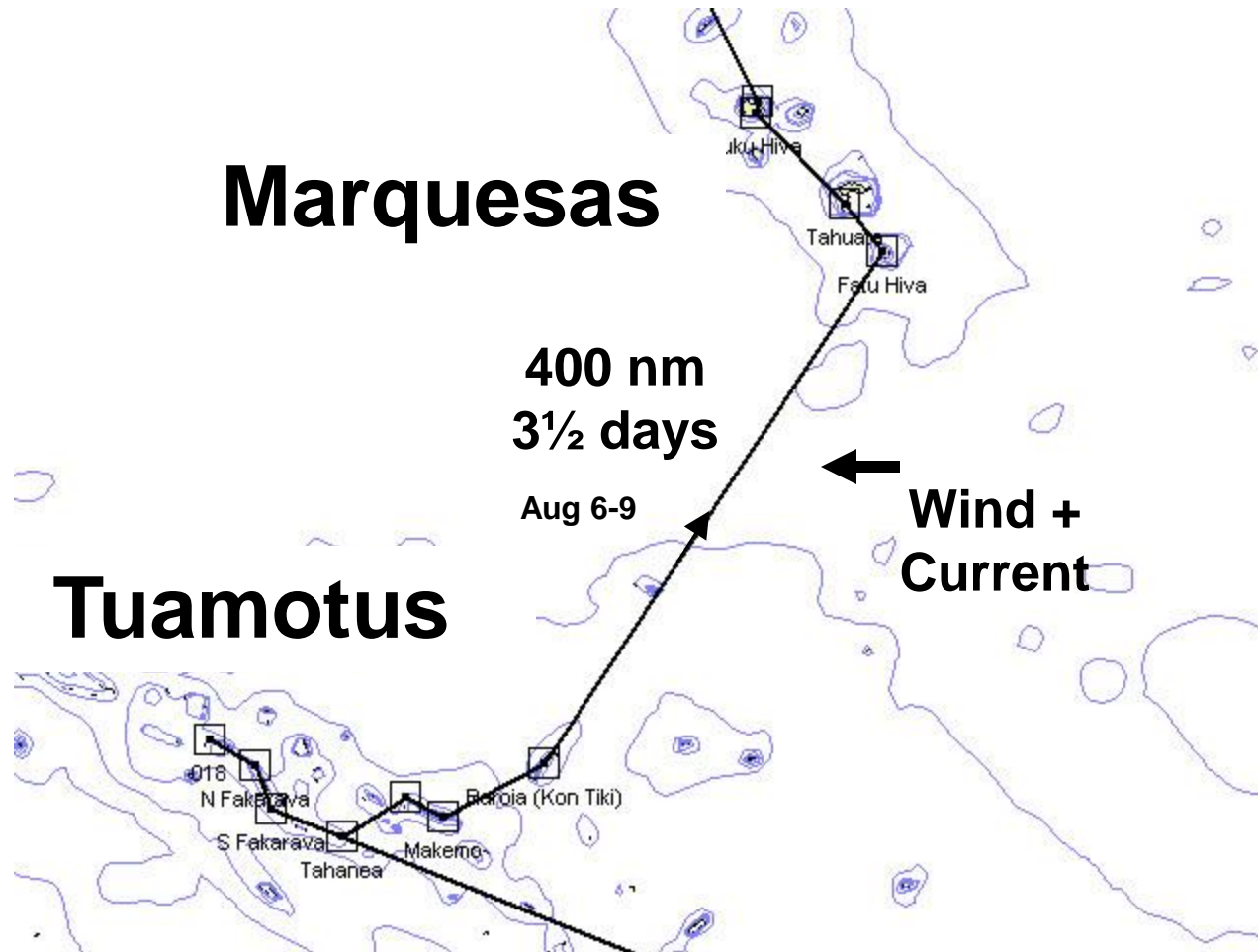


Completely Alone for 10 days



Incredible Vistas

Next Stop: The Marquesas



Hard on the Wind for Marquesas





**Land Ho!
Fatu Hiva**

Bay of Virgins Fatu Hiva





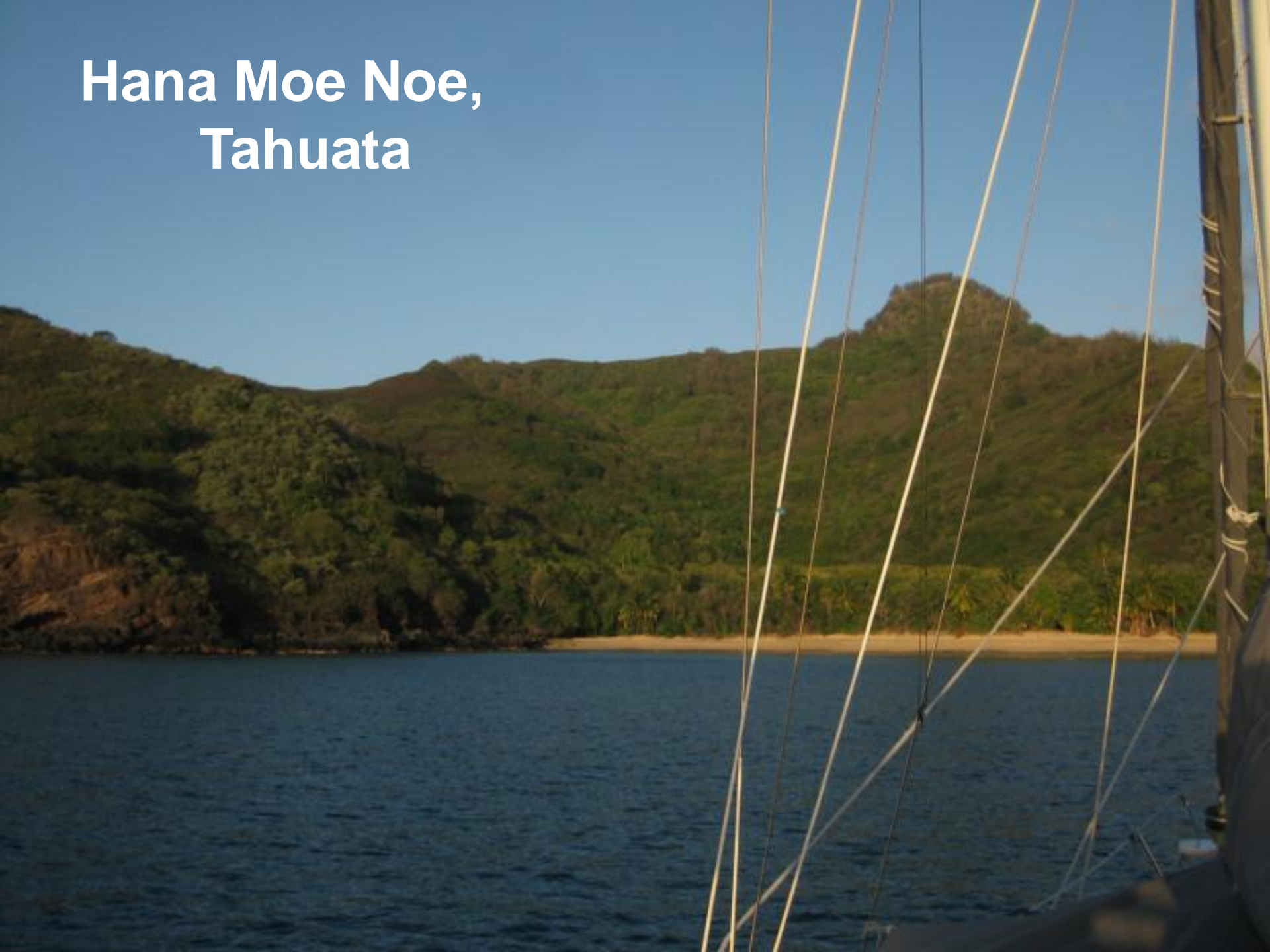




ILES MARQUISES



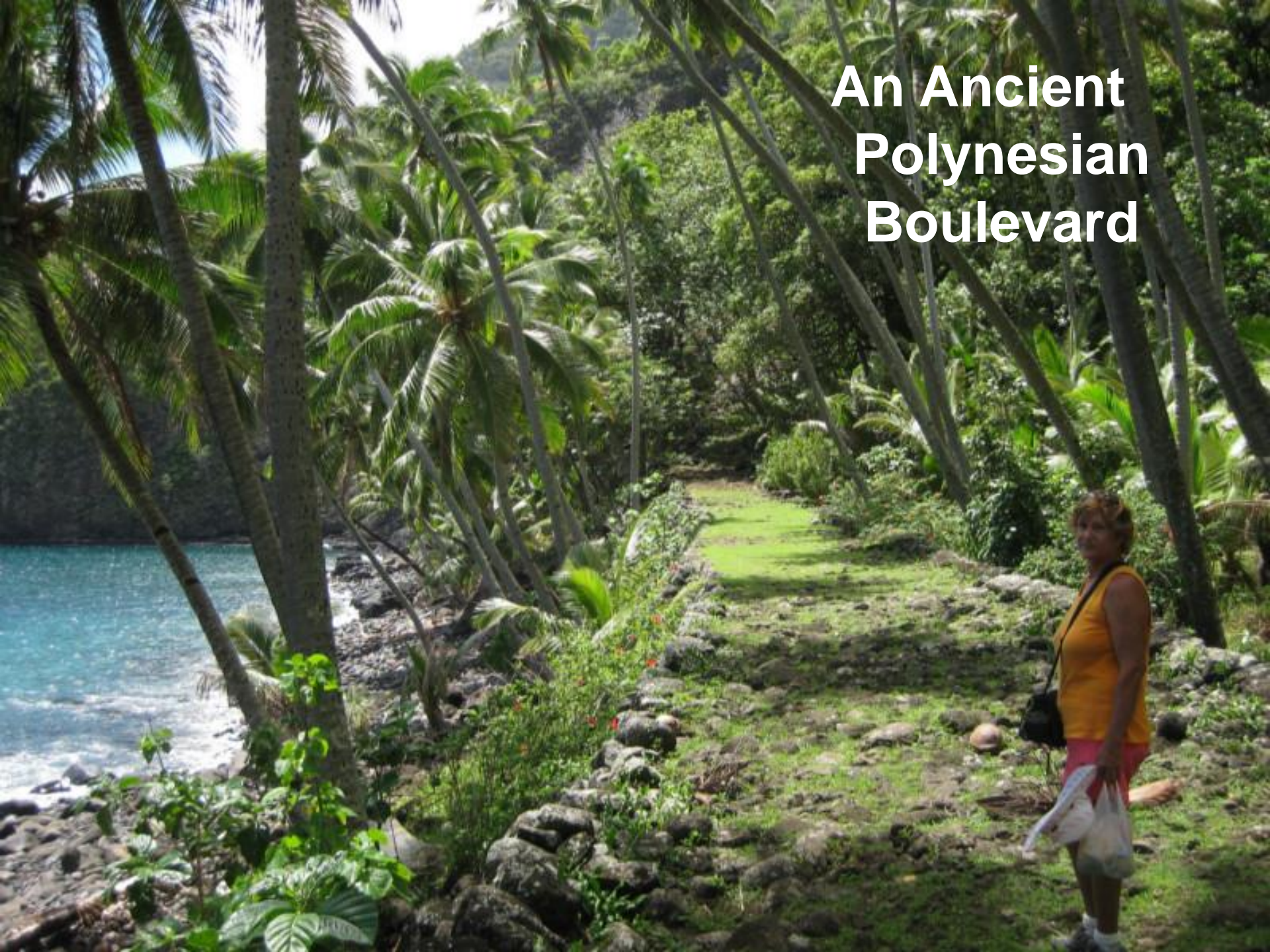
Hana Moe Noe, Tahuata





**Hana
Tefau,
Tahuata**

An Ancient Polynesian Boulevard





**View from
the Cross**

ILES MARQUISES

Fiaoo

Hiva

Ua Huka

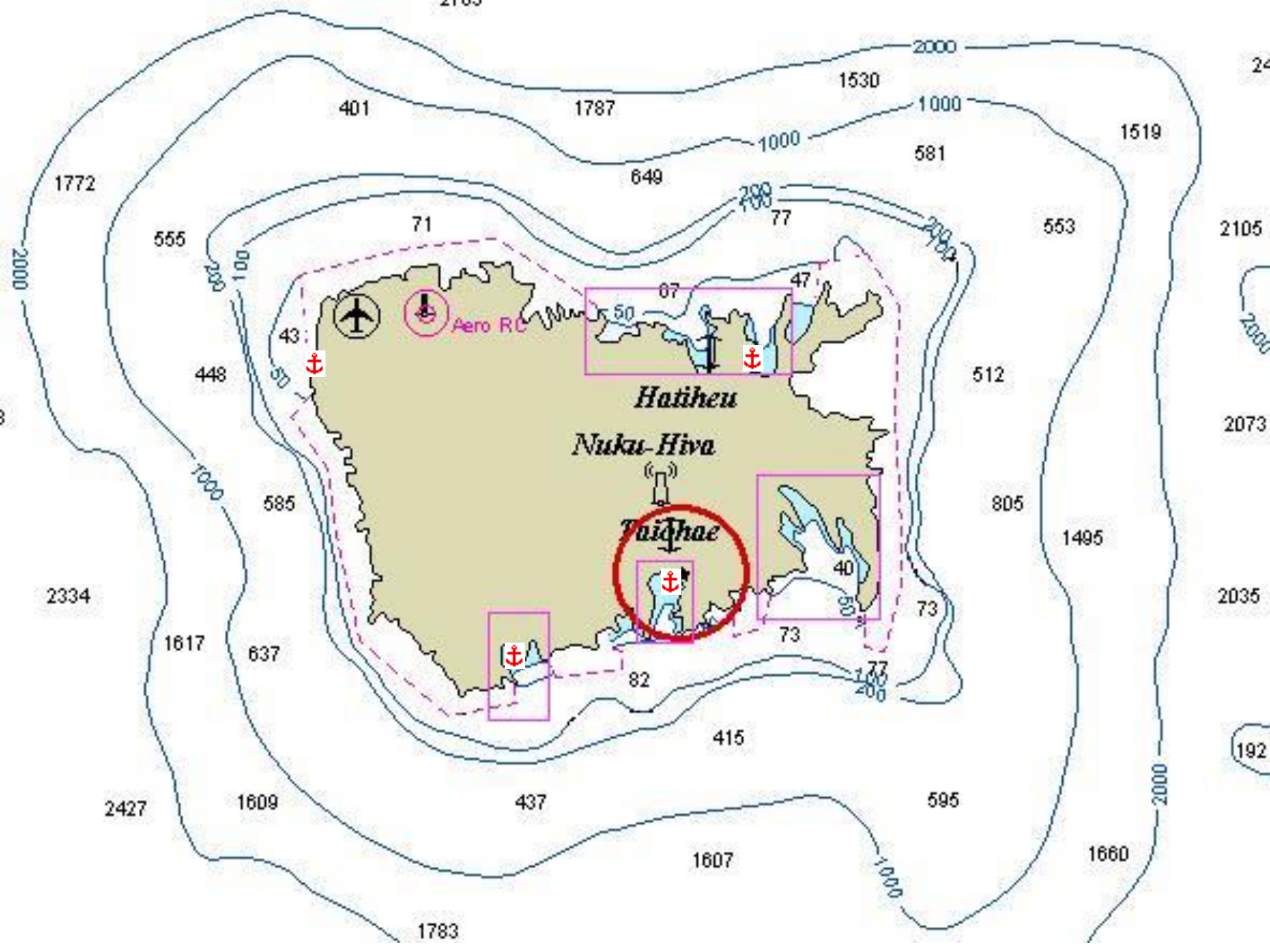
Ua Pou

Fatu Huku

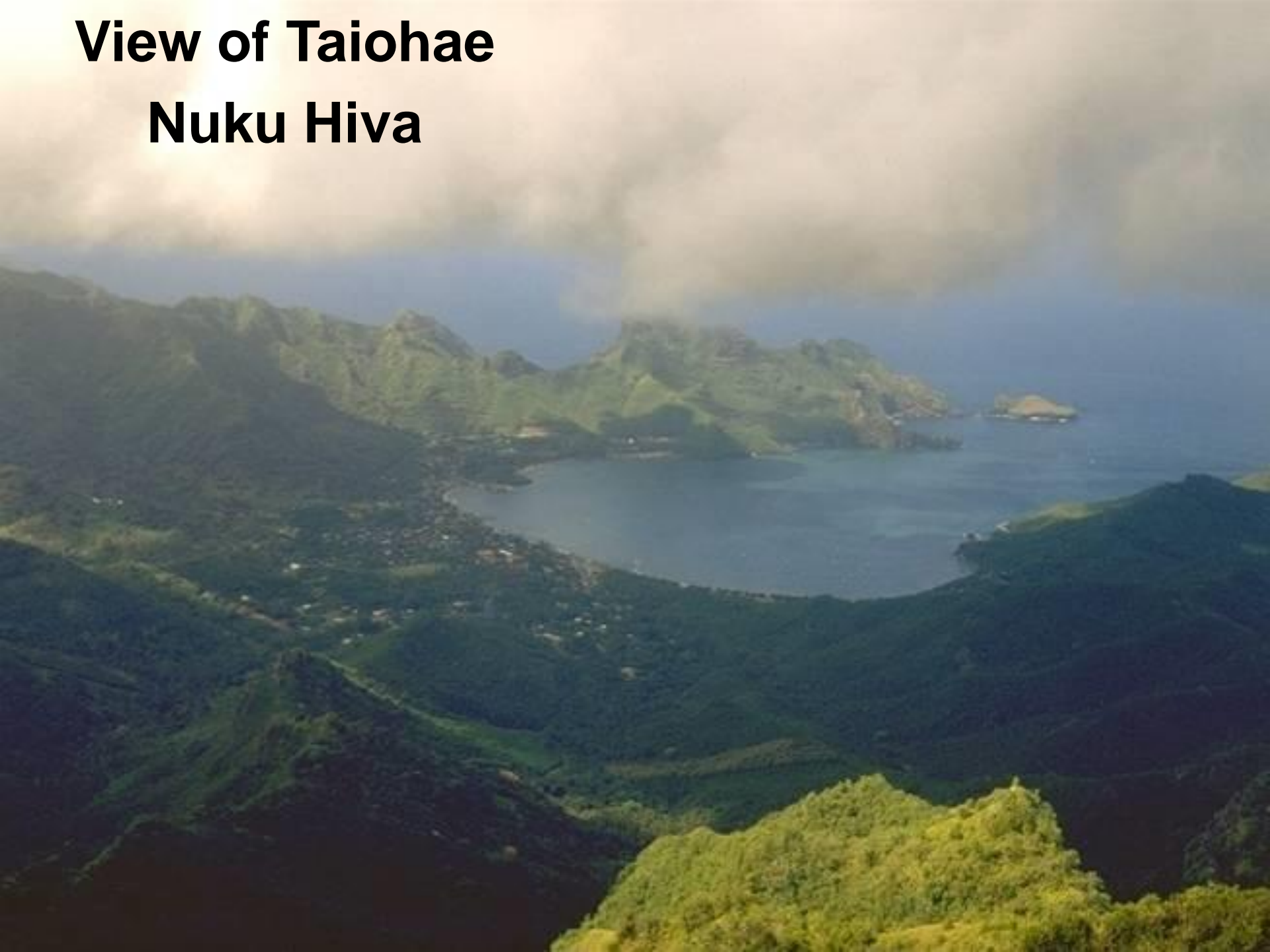
Hiva-Oa
Tahuata
Motane

Fatu Hiva





View of Taiohae Nuku Hiva







**Daniel's Bay
(Survivor)**

Hiking to the 3rd Highest Waterfall in the Pacific





Through Vast Marquesan Villages

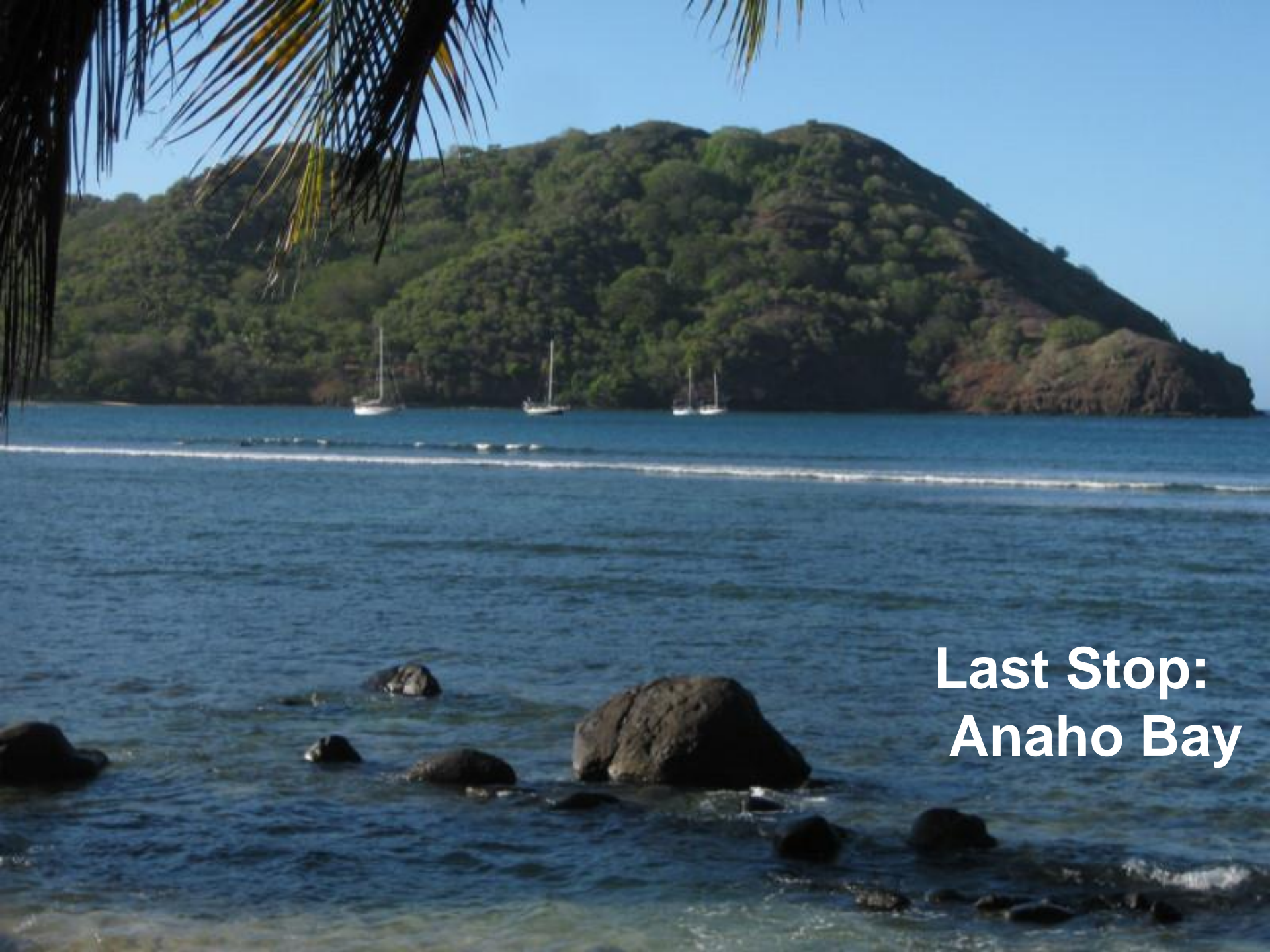


The Waterfall

Marquesan Hospitality





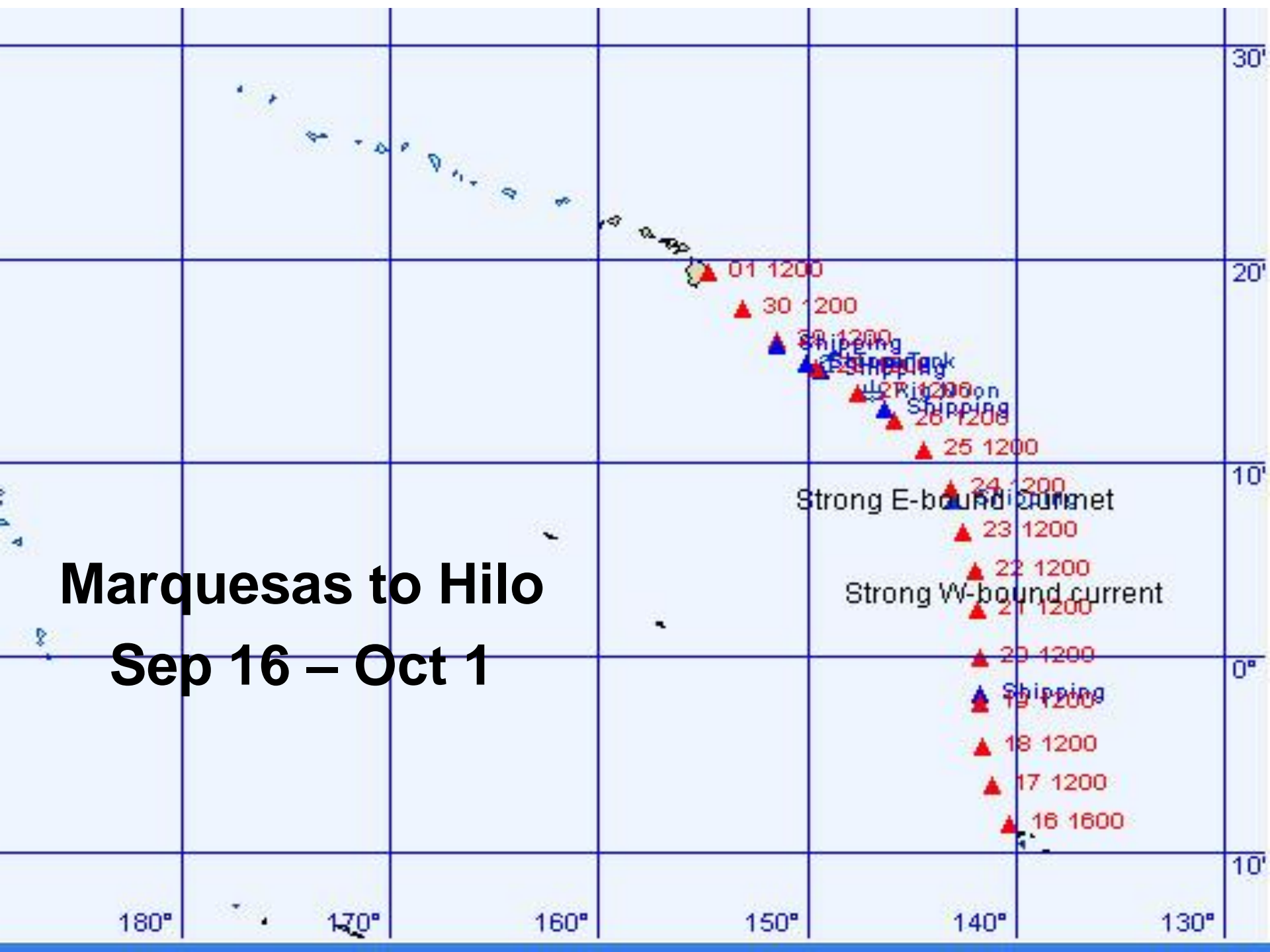


**Last Stop:
Anaho Bay**



Marquesas to Hilo

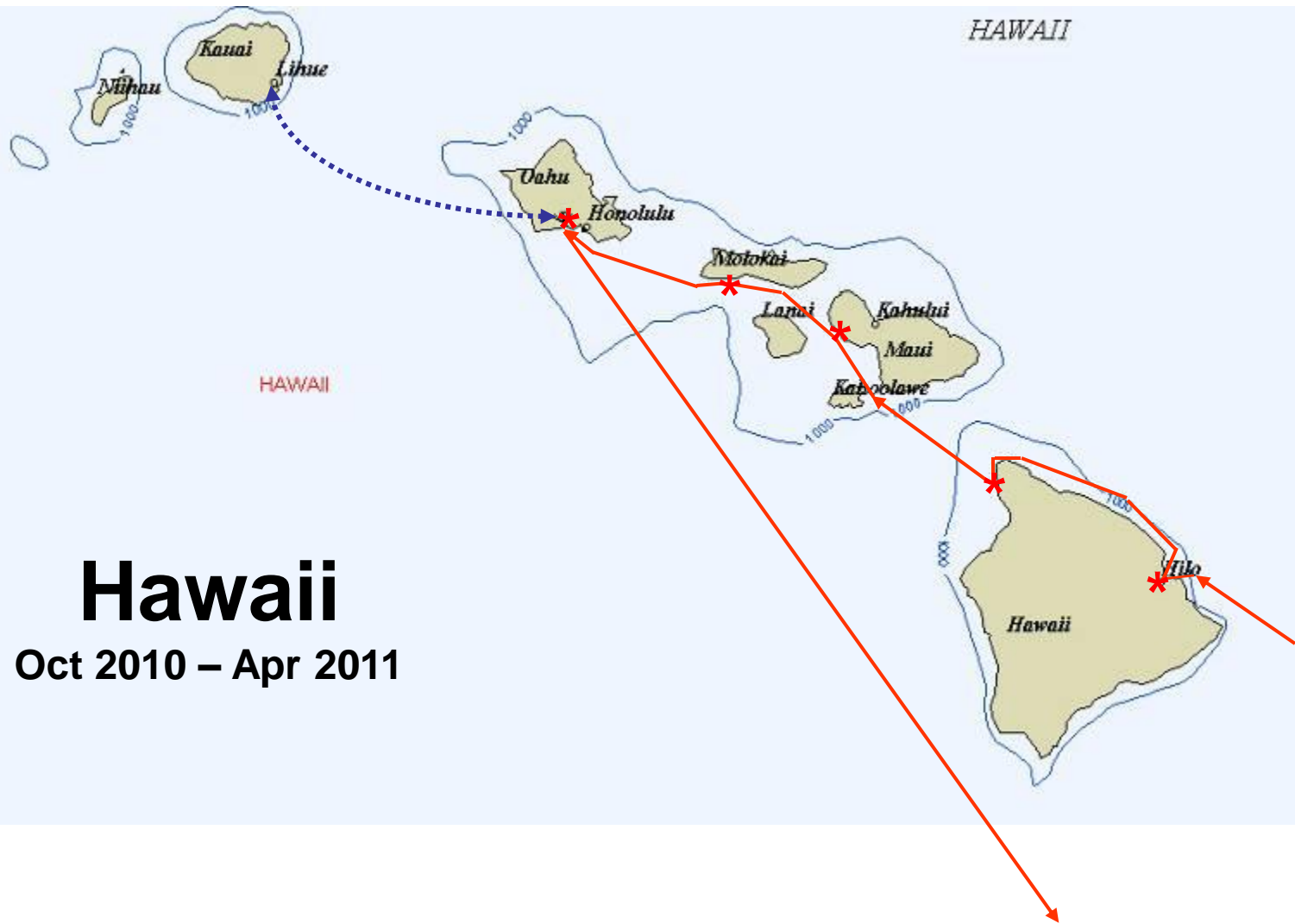
Sep 16 – Oct 1



Hawaii

Oct 2010 – Apr 2011





Hawaii

Oct 2010 – Apr 2011

LOTS of Boat Work



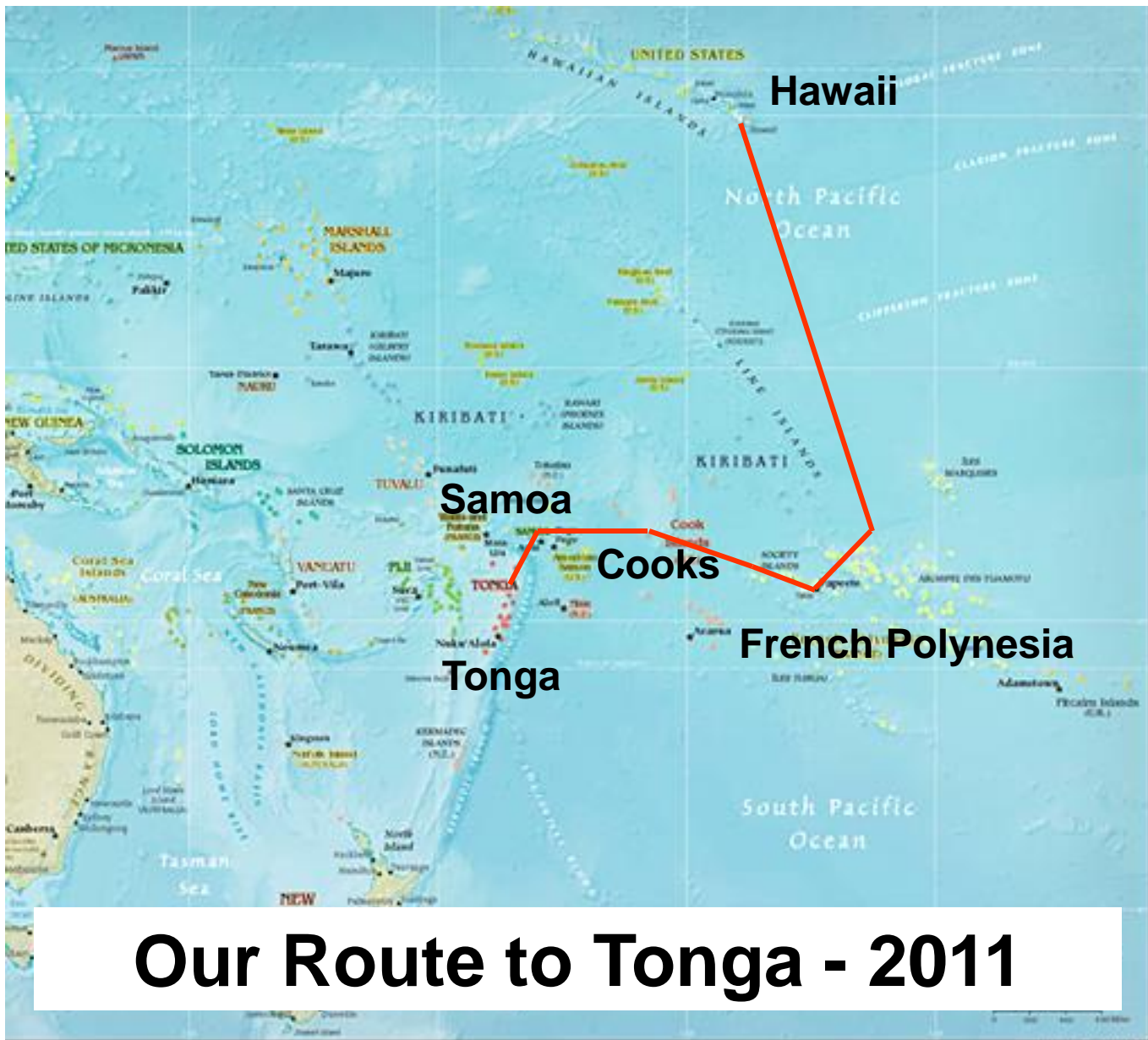
Some Sightseeing



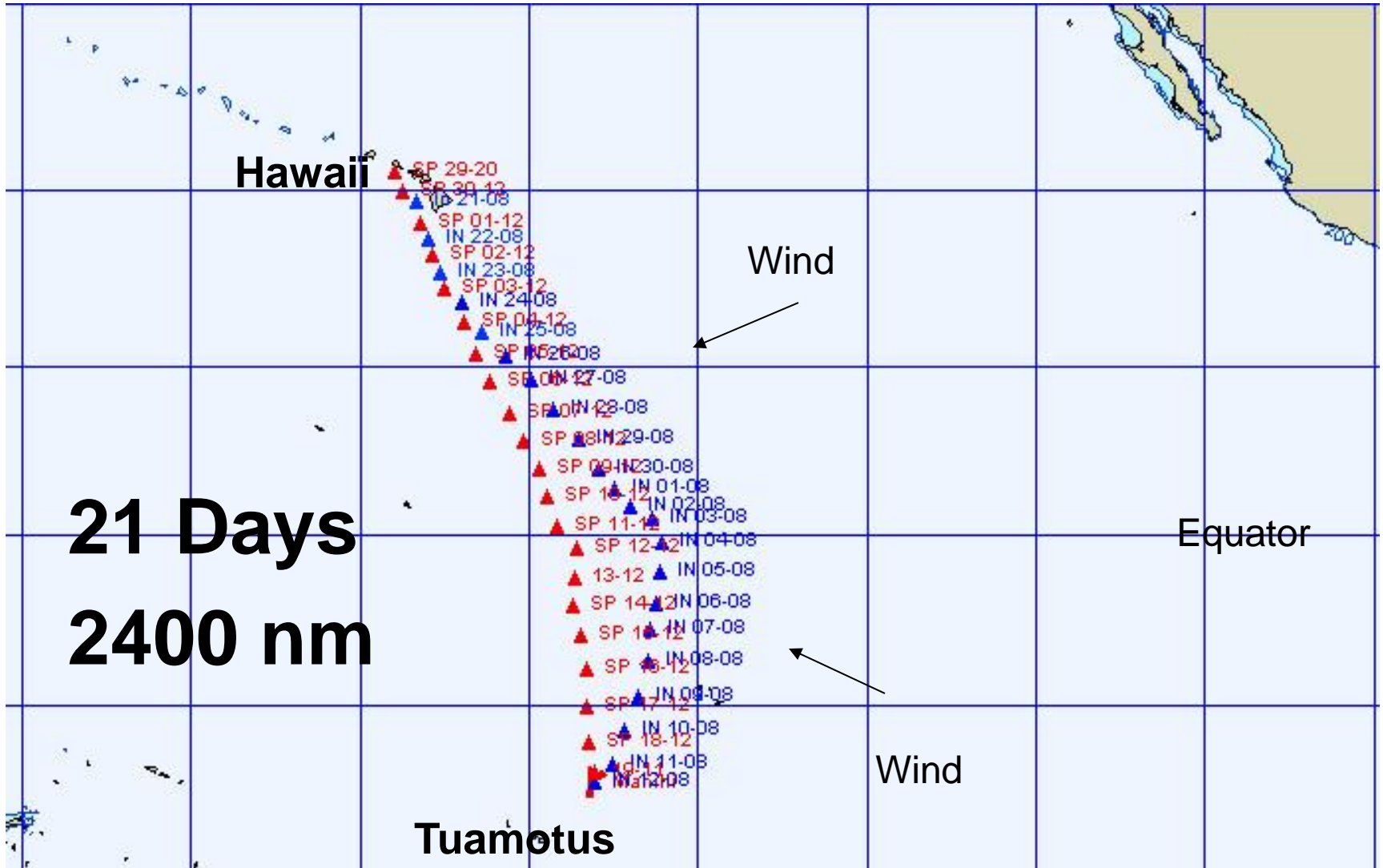


Our Route to Tonga - 2011





Hawaii to Tuamotus





**Hard
on the Wind
at First**

Crossing the ITCZ





Back in the Tradewinds!







Fun in the Tuamotus

Potlucks Ashore



Trying to Fix the Range Light



Hunting Coconut Crabs



Dinghy Trips into the Lagoon

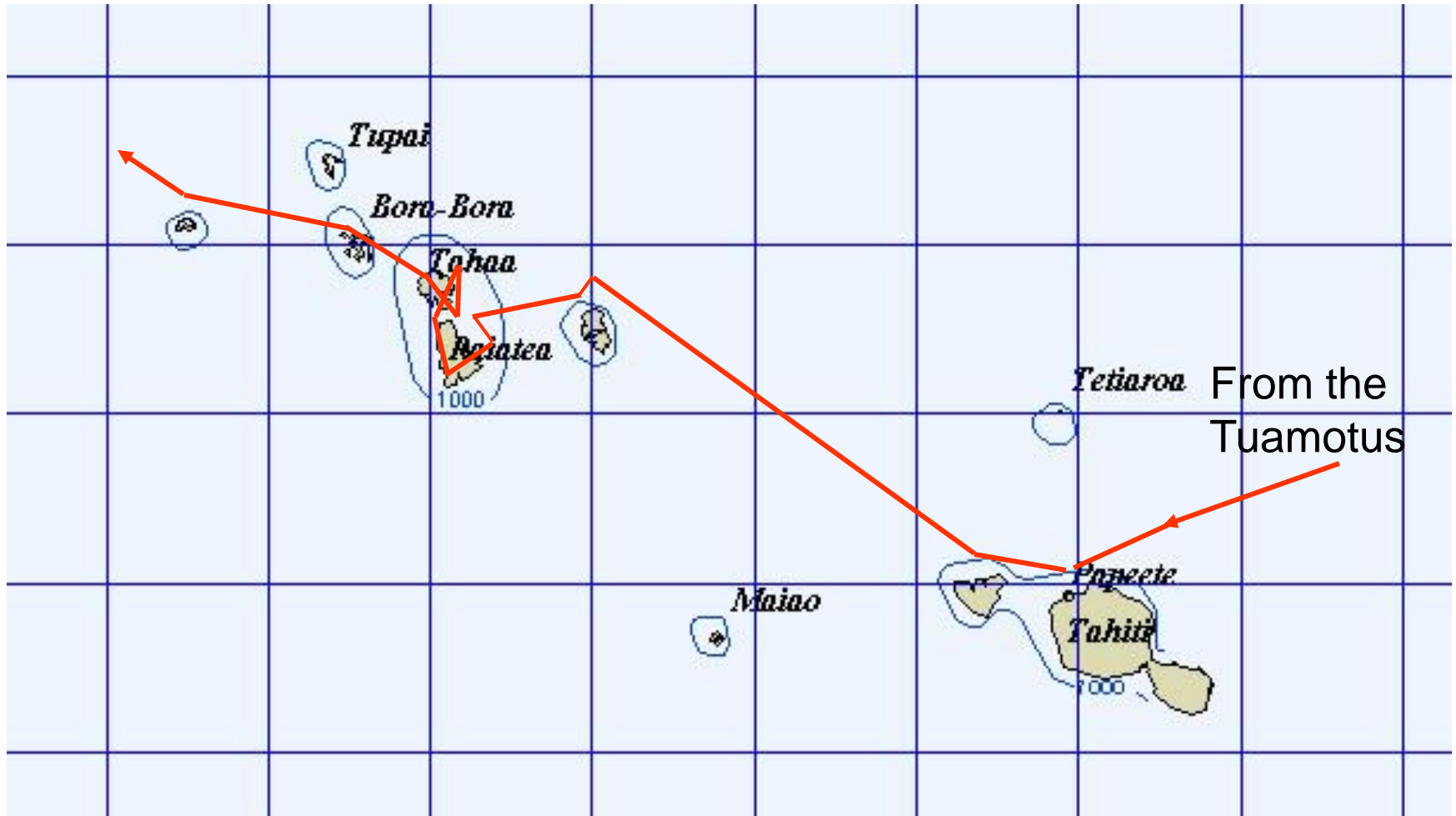




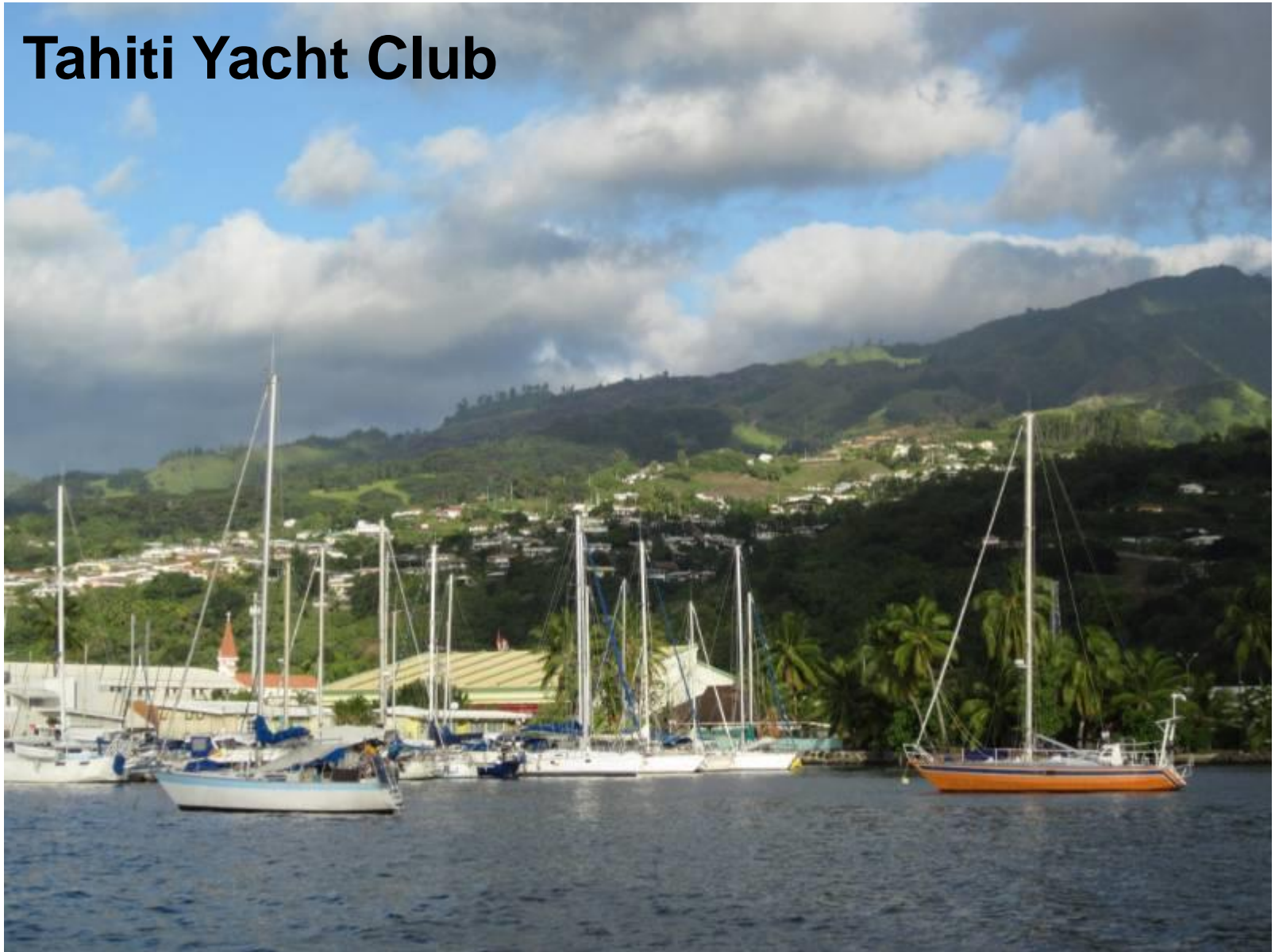
Gorgeous Sunsets

Through the French Society Islands

Tahiti, Moorea, Huahine, Raiatea, Tahaa, Bora Bora



Tahiti Yacht Club



Le Quai de Pape'ete



Marina Taina





Lush Tahitian Countryside



Pacific Puddle Jump Rendezvous

Race from Tahiti to Moorea



Moorea – Opunohu Bay



Cruiser Canoe Races



Dance Lessons for the Guys





... and the Girls



Island Touring



L'excursion *Bleue*
RAIATEA TAHAA
Tél. 66 10 90 www.tahaa.net
Pension & Fare d'hôtes
" les 3 cascades "

Hiking in Moorea, Raiatea, and Tahaa





Heiva Celebrations - Polynesian Fire Dancing



Beautiful Anchorages





Bora Bora At Last!



Diving with Manta Rays And Lemon Sharks







Giant Clams

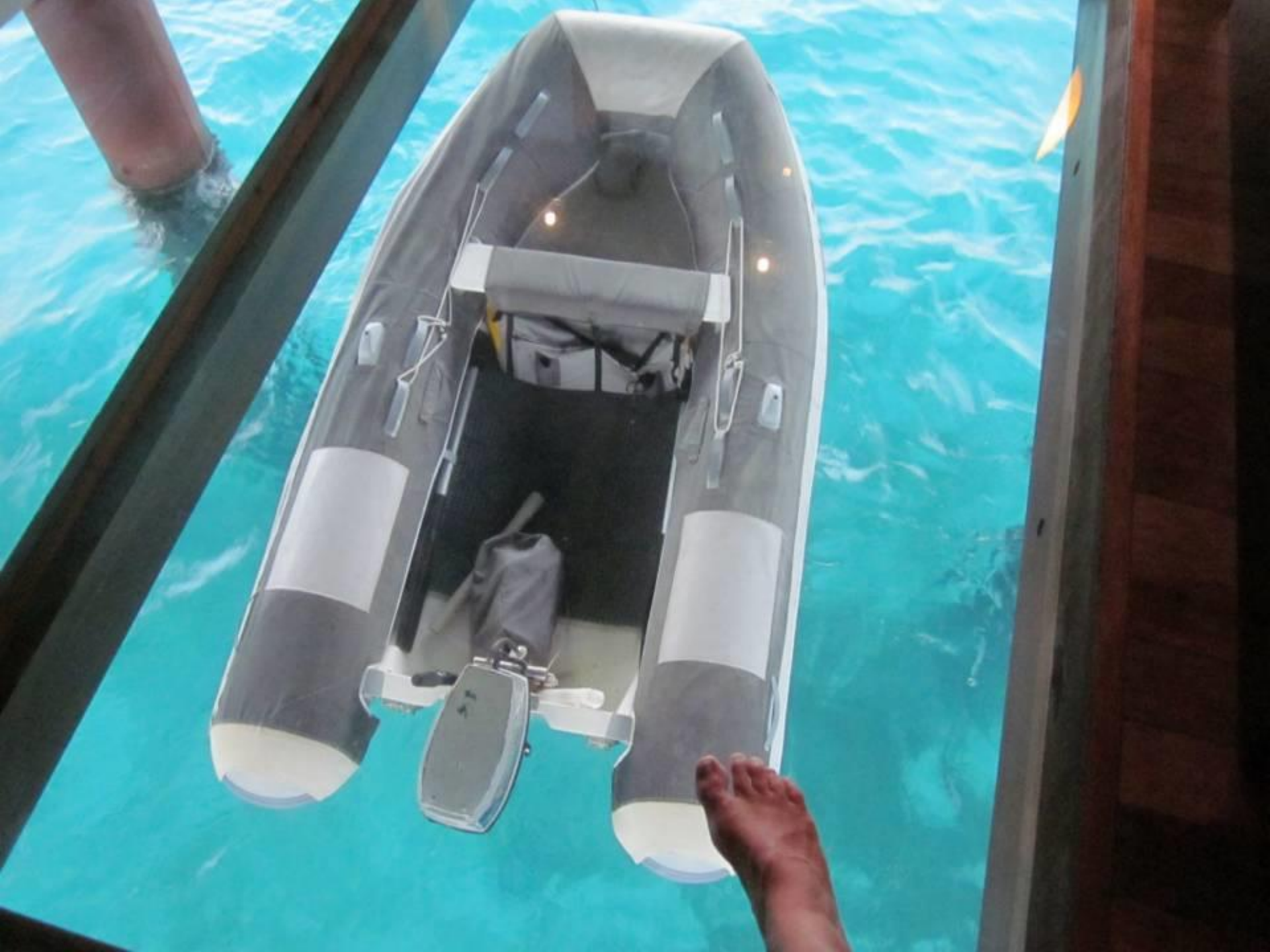


Over Water Resorts



Resorts

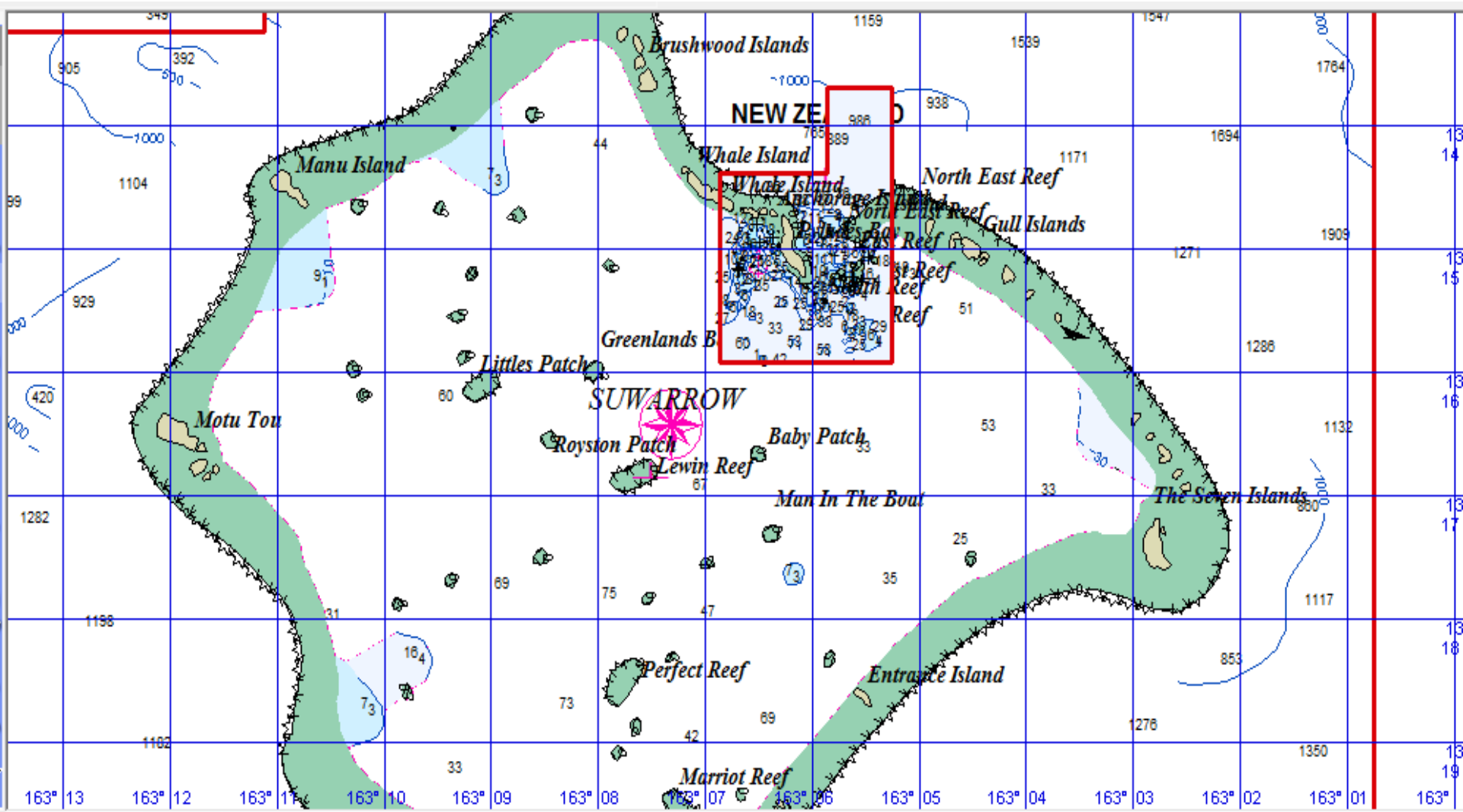
Data SIO, NOAA, U.S. Navy
Image © 2011 Digit





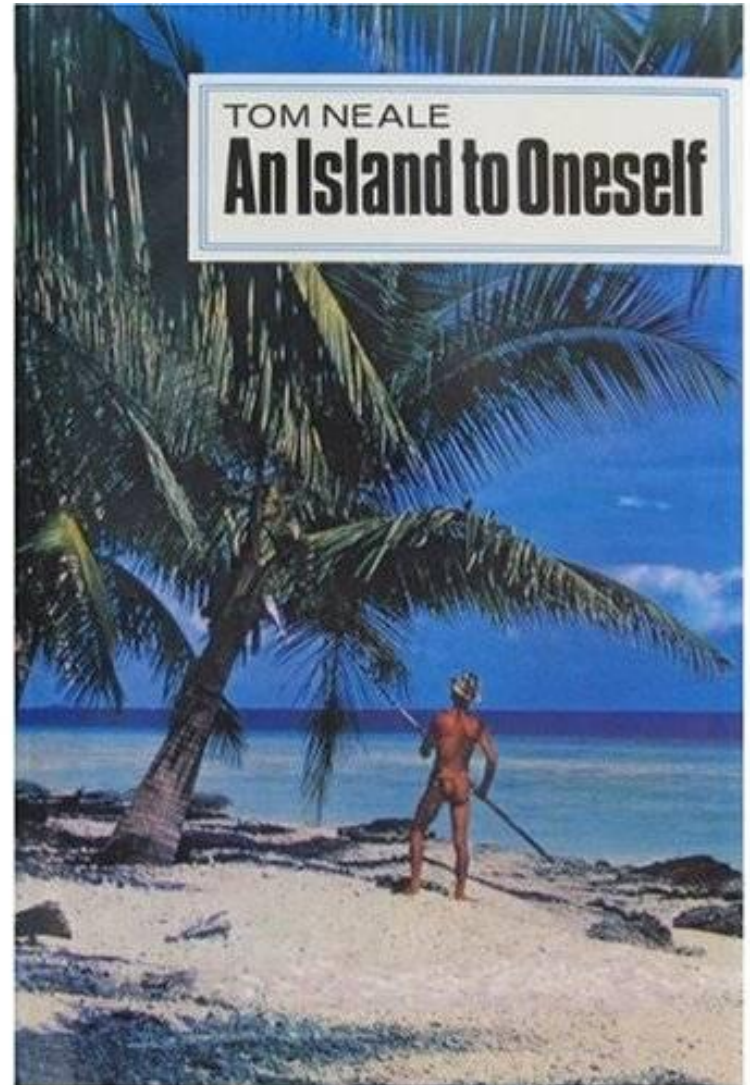
On Our Way to Suvarrow – A Day with No Wind

Suvarrow Atoll



Suvarrow Facts

- Belongs to Cook Islands
- Made famous by Tom Neale's Book
- Now a Cook Islands National Park
- Several day's sail from anywhere
- Only ~100 yachts a year visit





James and April, your hospitality is unsurpassed
GOD BLESS YOU BOTH AND YOUR BEAUTIFUL ATOLL SURROUND ISLANDS

2. RETURN VISITORS and TALK

GREEN PLANET
TOYS



CANADA

Pacific Buddle Jump
(2011)
Latitude38.com

2011 Pacific Buddle Jump
s/v TRUTEA
Latitude38.com

JANE & JOHN
SAVED OUR SOULS
PYEYKET & SYDIA

s/v DILLIGAP

2011

THANKS
BILL SUE

SILVER

LIMITED

YOU & LUCY
2010

-
- A wooden signpost stands on a sandy beach, featuring seven directional arrows pointing to various cities and their distances in nautical miles (NM). The arrows are arranged vertically, with the top arrow pointing left and the others pointing right. The background shows a tropical beach with palm trees and the ocean under a blue sky.
- | City | Distance (NM) |
|----------|------------------|
| SUWARROW | 1314 S
4126 W |
| LONDON | 9500 NM |
| SYDNEY | 2800 NM |
| PANAMA | 5200 NM |
| HAWAII | 2000 NM |
| AUCKLAND | 1850 NM |
| NEW YORK | 6000 NM |







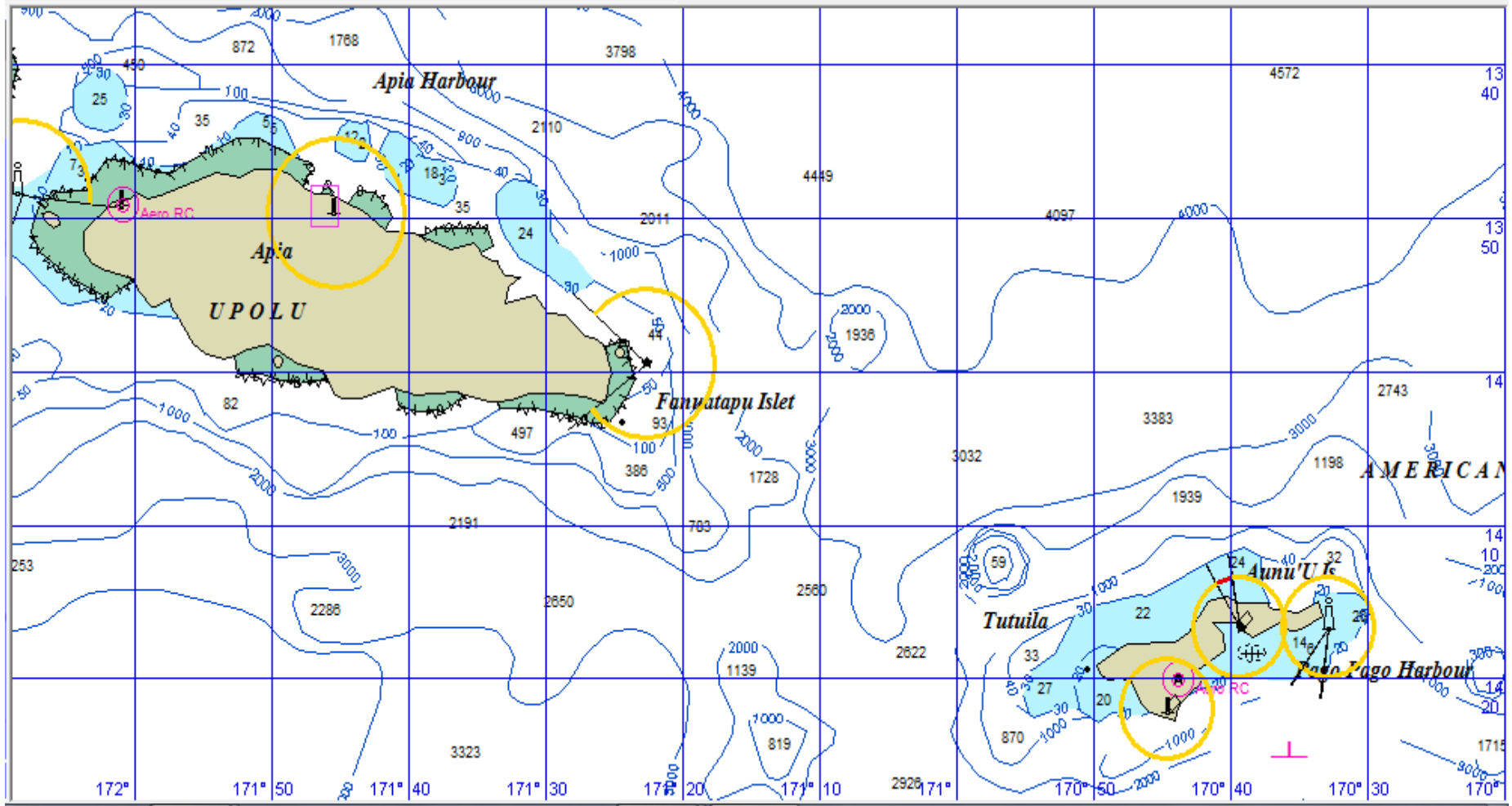






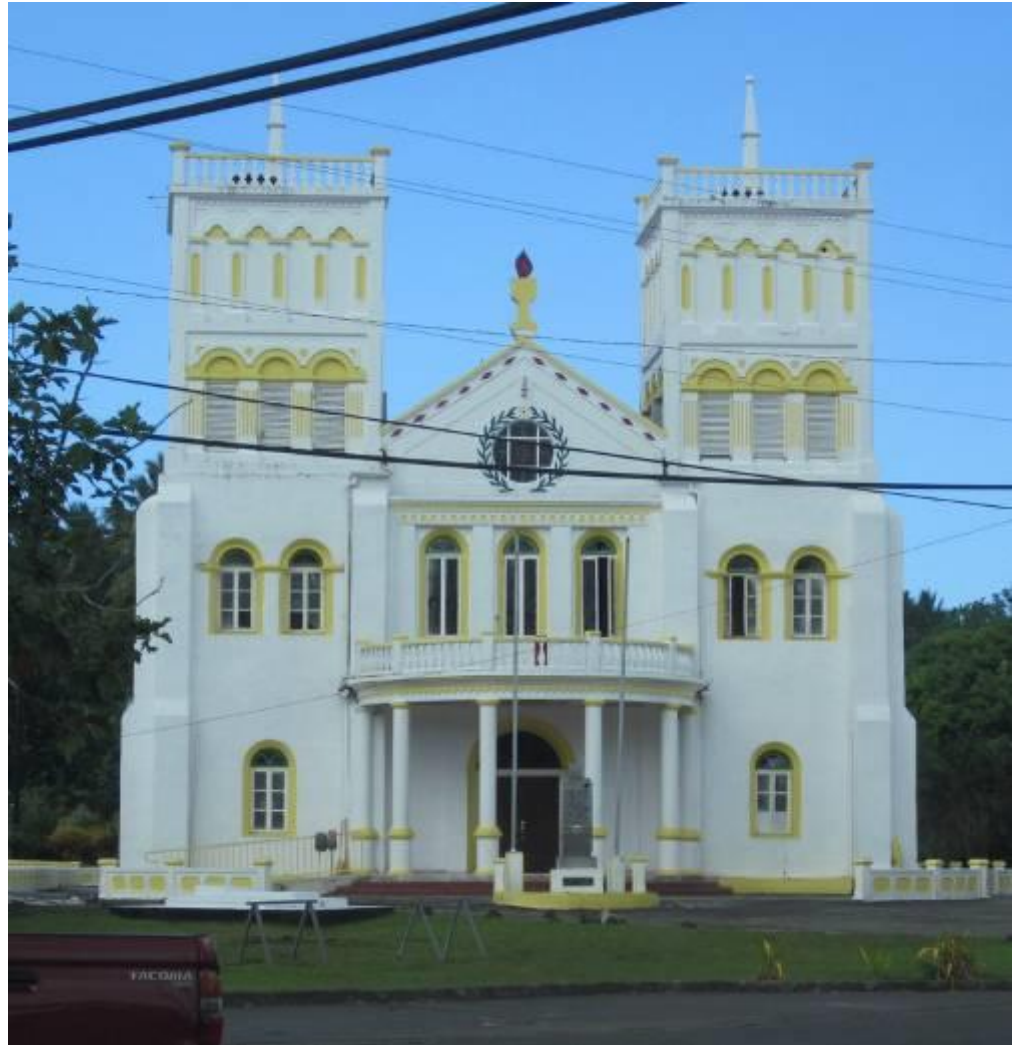


Samoaas



Samoa's Facts

- 2 Different Countries
 - American Samoa + Western Samoa
- Same Language / Heritage
- Traditional Living + Western Influence
- Most churches per square mile in the Pacific









Pago Pago Harbor







The Tuna Fleet In Port



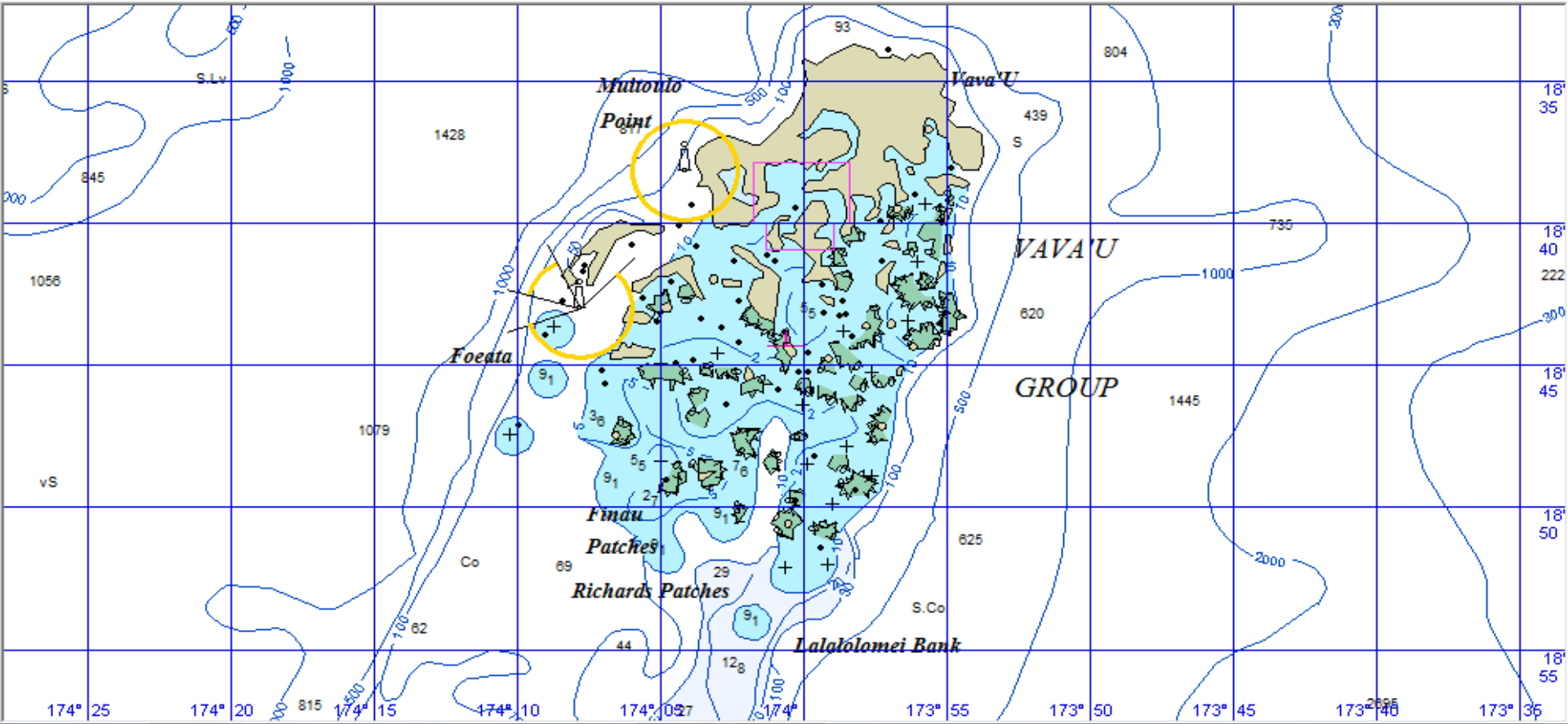


Our Hotel





Vavau, Tonga



The Kingdom of Tonga



- 176 Islands over 500 miles
- Discovered by Captain Cook in 1773
- Languages: Tongan, English
- British Protectorate in 1800

Traditional Ways



With Modern Influences...

The screenshot shows the Digicel Tonga website homepage. At the top, there is a browser window with the address bar showing 'www.digiceltonga.com/en/'. Below the browser window is the website's header, featuring the Digicel Tonga logo on the left and navigation links for 'About Us', 'Contact Us', and 'My Digicel' on the right. A search bar and a 'Find a Retailer...' button are also present. A red navigation bar contains links for 'Home', 'Price Plans', 'Phones', 'Services', 'Coverage & Roaming', 'Help & FAQs', and 'News'. Below the navigation bar, there are links for 'Latest News', 'Latest Promotions', 'About Us', and 'Go Green', along with a 'Register now to top up online' button. The main content area features a large banner with the text 'Welcome to Digicel Tonga!' and an image of three smiling women. A testimonial box on the left contains a quote from Saane Latusele, Kolofo'ou, about the benefits of DigiHome. On the right, a 'Quick Links' sidebar lists 'Price Plans', '10 Reasons to Choose Digicel', and 'Find a Retailer' with red play button icons.

Home - Cell Phones Tonga, Phi x

www.digiceltonga.com/en/

ASUS eee BBSs Y Cars SKY NEWS Gordon Gray Blog Friends PAC Wx News Sports CSY TV VRBO Other Wx Other bookmarks

About Us | Contact Us | My Digicel

Search Digicel... Find a Retailer...

Home Price Plans Phones Services Coverage & Roaming Help & FAQs News

Latest News Latest Promotions About Us Go Green Register now to top up online

Welcome to Digicel Tonga!

Online Top up click here

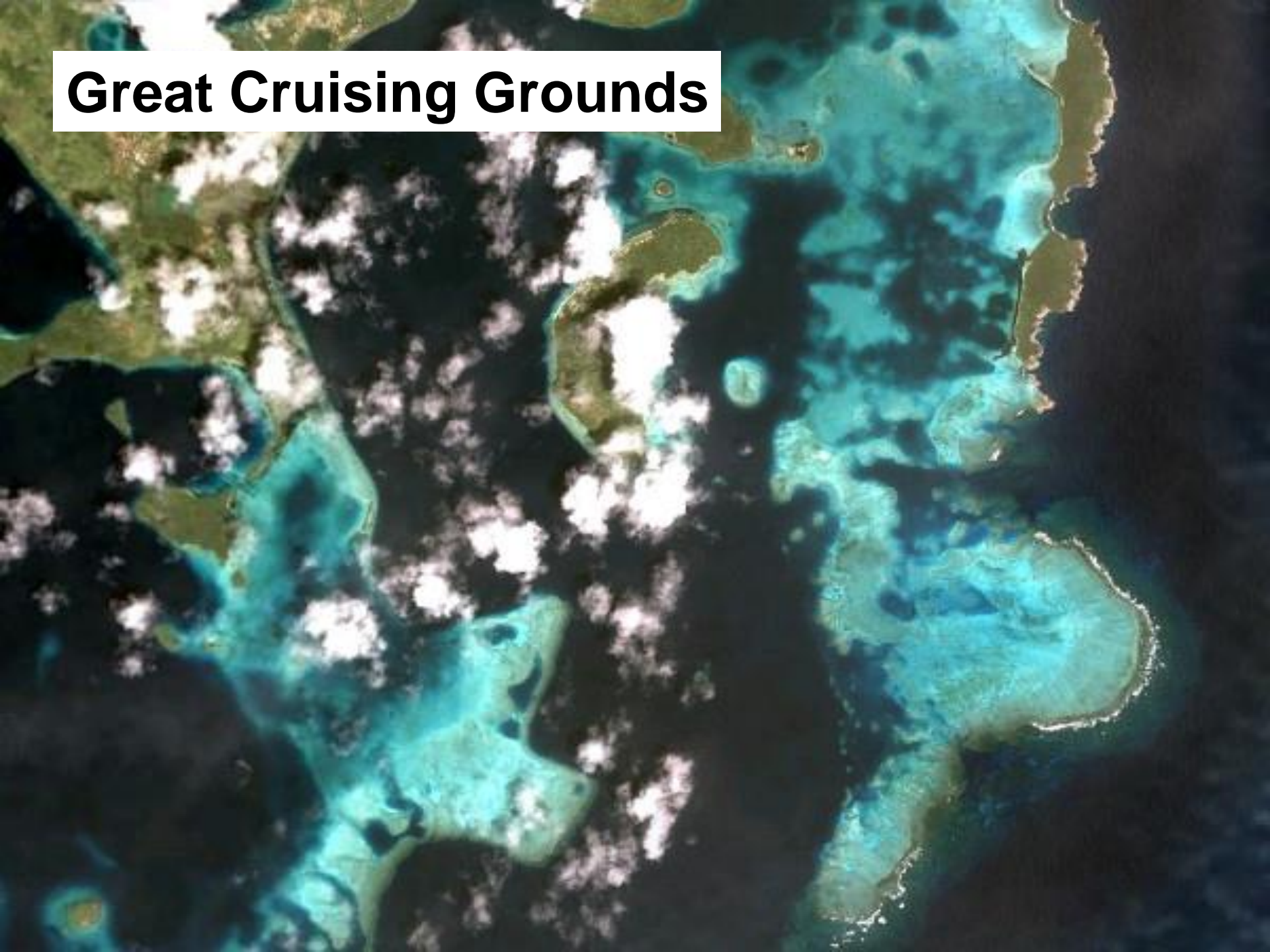
"With DigiHome I pay no line rental and 10 cents per minute to ALL landlines, leaving more for my grandson's education."

Saane Latusele, Kolofo'ou

Quick Links

- Price Plans
- 10 Reasons to Choose Digicel
- Find a Retailer

Great Cruising Grounds



Neiafu Harbor in Peak Cruising Season





The Local Market















Our Pacific Travel Summary

12 Sep 2008 to 31 Oct 2011

- Miles Traveled (by boat) 15,400
- Countries Visited 13
- Nights On Passage 109
- Nights In a Marina 391
- Included
 - 13 months in Ecuador and Hawaii
 - 135 days in Florida
 - 142 days Inland Travel in Central & South America

Tonga to Australia via Micronesia

Apr 2012-Nov 2016, 7550 nm



More here...

<http://svsoggypaws.com>

<http://svsoggypaws.blogspot.com>



ssca.org



The End